

LOCAL AND REGIONAL COMPETITIVENESS PROJECT

Environmental & Social Management Plan Checklist

WORKSHOP OF FILIGREE

VANGEL DEREBAN

NOVA CHVRGA export-import Ohrid DOOEL – Subsidiary NOVA
CHVRGA 2 Ohrid

December 2020

Contents

1. Introduction of the project	3
2. Short description of the sub-project	3
3. Environmental Category.....	14
3.1 World Bank Safeguard Policies/Categorisation.....	14
3.2 Environmental assessment according to national legislation.....	15
4. Overview of Impacts	15
5. Purpose of ESMP Checklist, Disclosure Requirements.....	17
6. Application of ESMP Checklist.....	18
7. Mitigation Measures	19
8. Monitoring and Reporting Procedures and Distribution of Responsibility.....	20
Institutional & Administrative arrangements	21
Environmental and social screening.....	24
Mitigation measures Checklist.....	25
Monitoring Plan	33

1. Introduction of the project

Local and Regional Competitiveness Project (LRCP) is a four-year investment operation, supported by European Union using funds from IPA II earmarked to competitiveness and innovation in Macedonia. LRCP is managed as a Hybrid Trust Fund and consist of four components, executed by the World Bank and the Government of Macedonia. The Project will provide investment funding and capacity building to support sector growth, investment in destinations and specific destination prosperity. At the regional and local levels, the Project will support selected tourism destinations in the country through a combination of technical assistance to improve destination management, infrastructure investment and investments in linkages and innovation. The investments will be undertaken through a grant scheme for the regional tourism stakeholders such as municipalities, institutions, NGOs and private sector.

This Environmental and Social Management Plan (ESMP) Checklist has been prepared for activities carried within the sub project Workshop of Filigree Vangel Dereban by NOVA CHVRGA export-import Ohrid DOOEL – Subsidiary NOVA CHVRGA 2 Ohrid. The ESMP Checklist presents the project description, technical details, scope, setting and location based on which it assesses environmental and social risks.

Implementation of mitigation measures addressing the identified risks and issues as well as monitoring plan defined in the ESMP Checklist is mandatory as is compliance with the national environmental and other regulation, and WB operational policies.

2. Short description of the sub-project

The main goal of the sub-project „Workshop of filigree – Vangel Dereban” is to re-create the workshop of Mr. Vangel Dereban and establish the Museum of filigree with his works. The project will support filling in gaps in the destination of Ohrid, Struga and the surrounding area in terms of activities and experiences that can be offered to tourists, such as:

- Acquaintance of tourists with traditional crafts;
- Offer of unique souvenirs; and
- Organization of courses for filigree craftsmanship.

The pictures in Annex 1 depict the existing situation.

The steps for implementation of the project are the following:

1. Civil works for interior arrangement of the workshop and the museum.

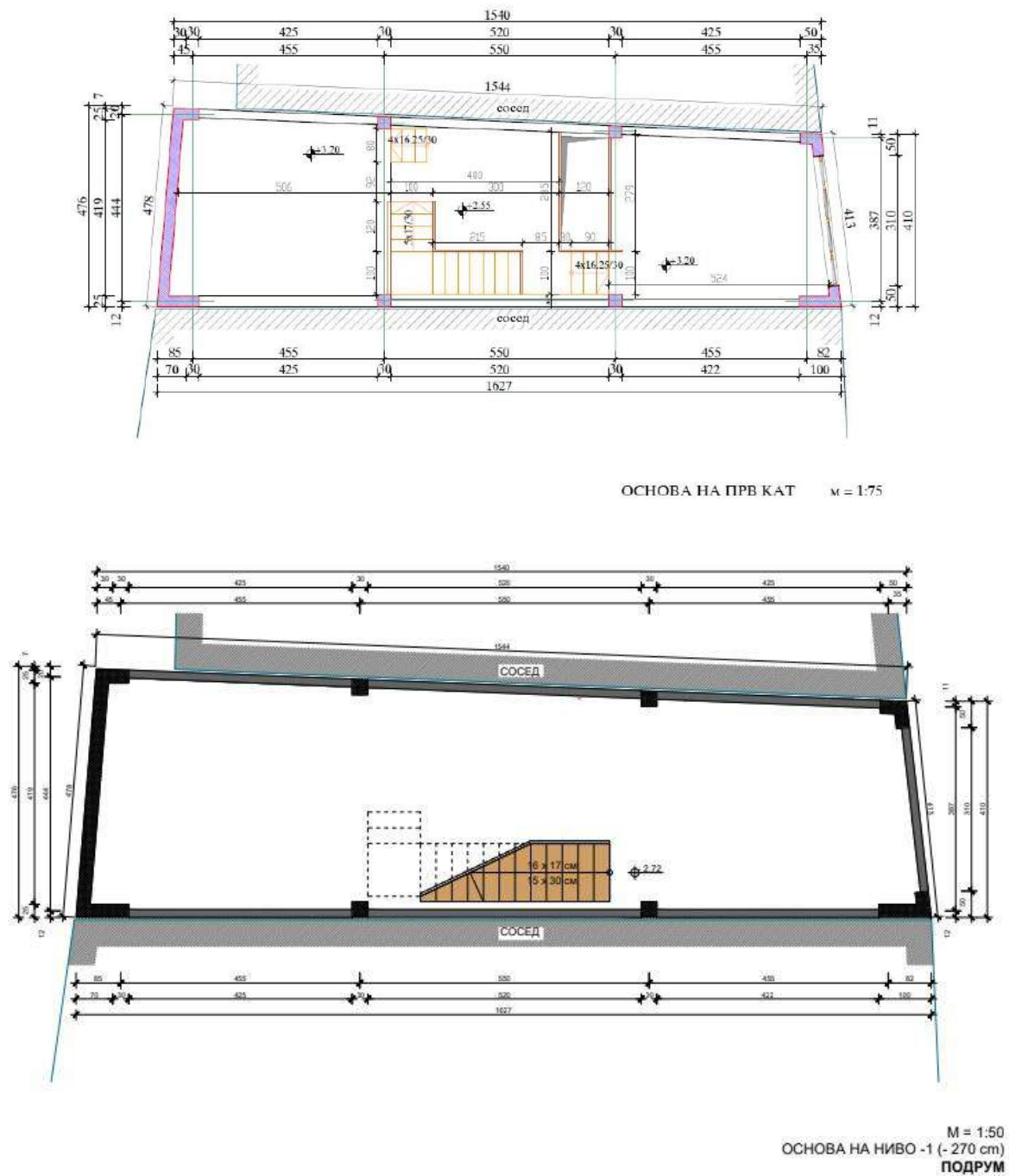


Figure 1. Current situation of basement, ground floor and first floor

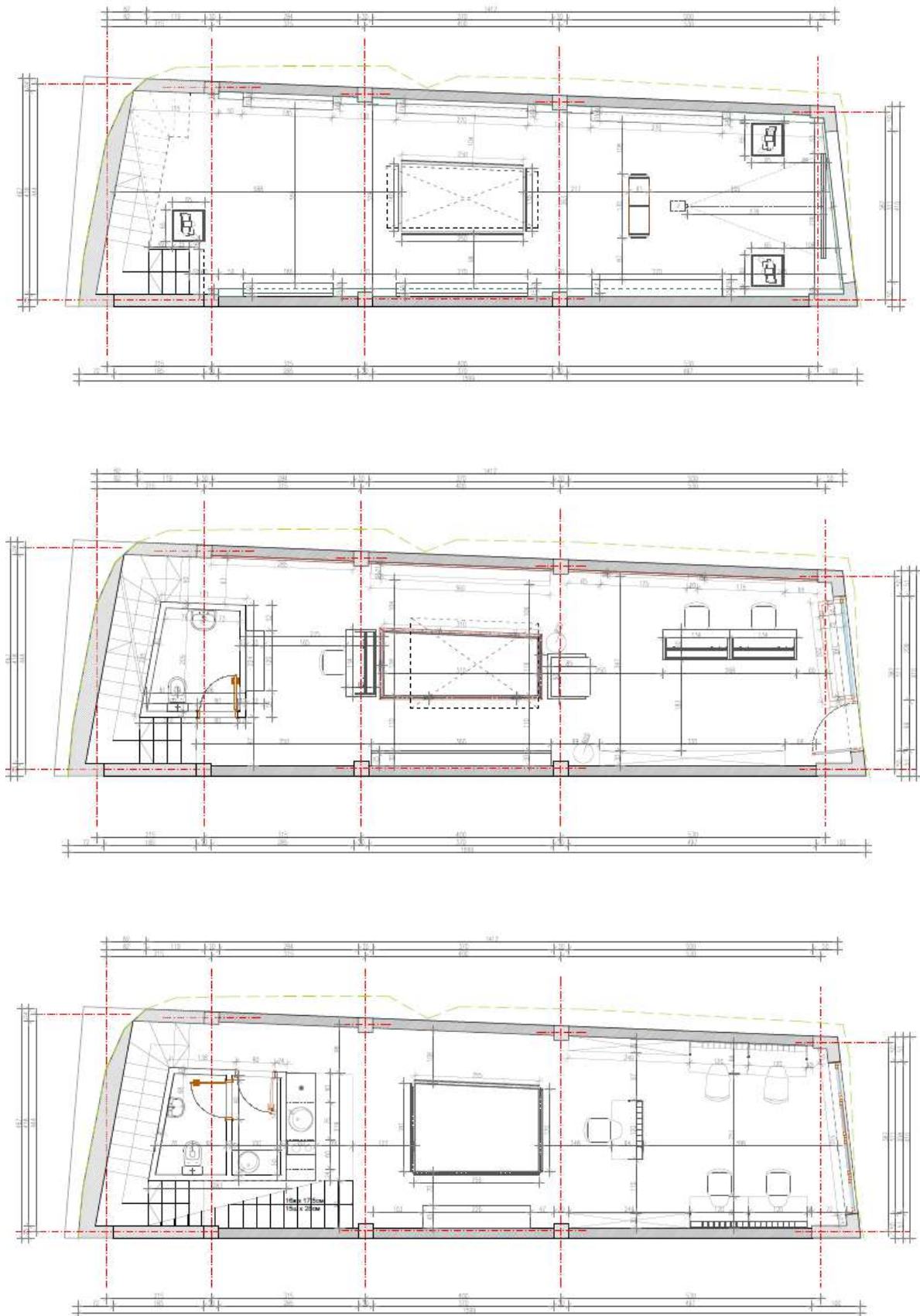


Figure 2. Situation of basement, ground floor and first floor according to new detail design (functional solution)

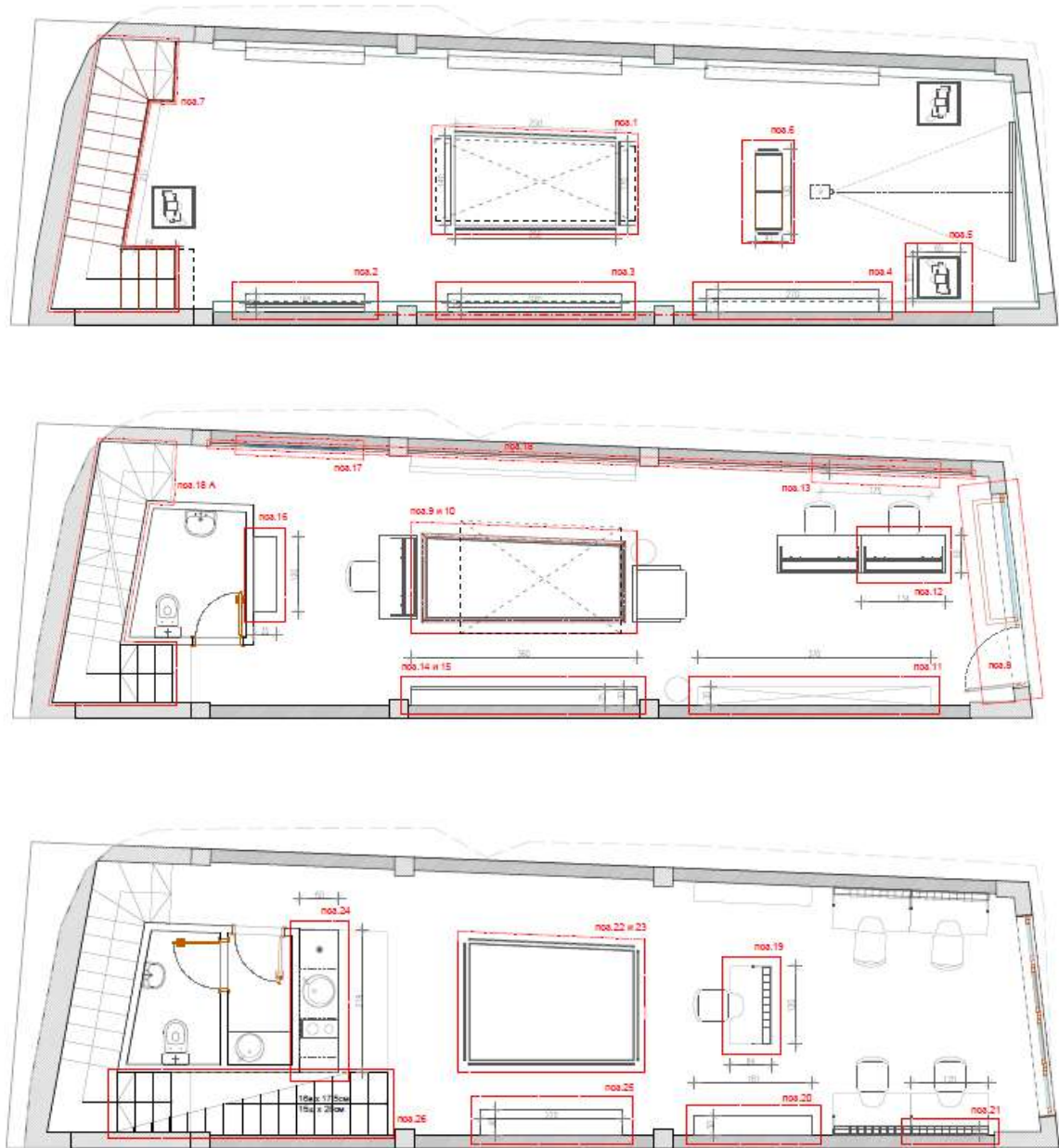


Figure 3. Situation of basement, ground floor and first floor with furniture according to new detail design (functional solution)

2. Installation of equipment.

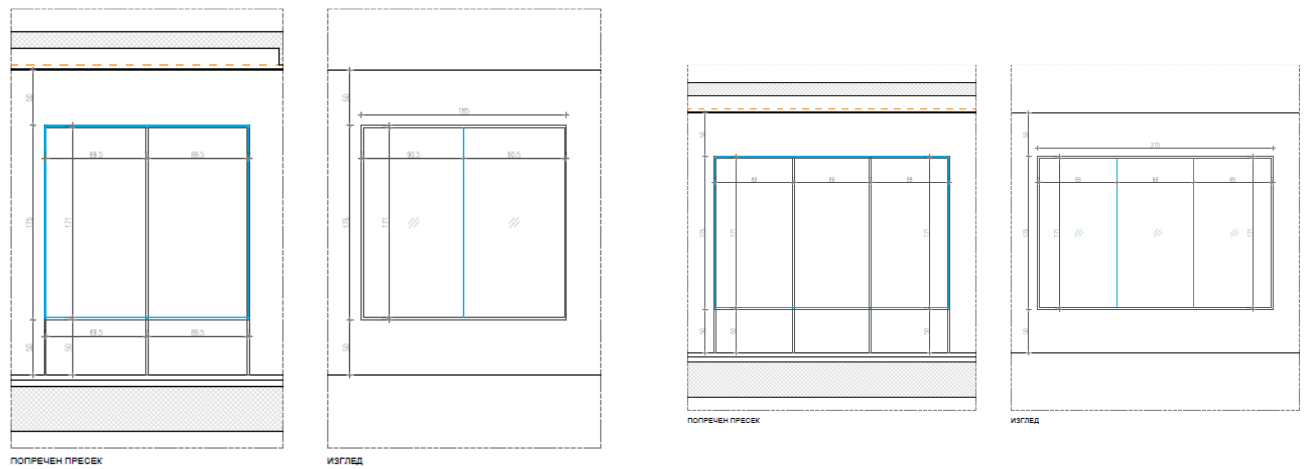


Figure 4. Island cabinet/cabinets

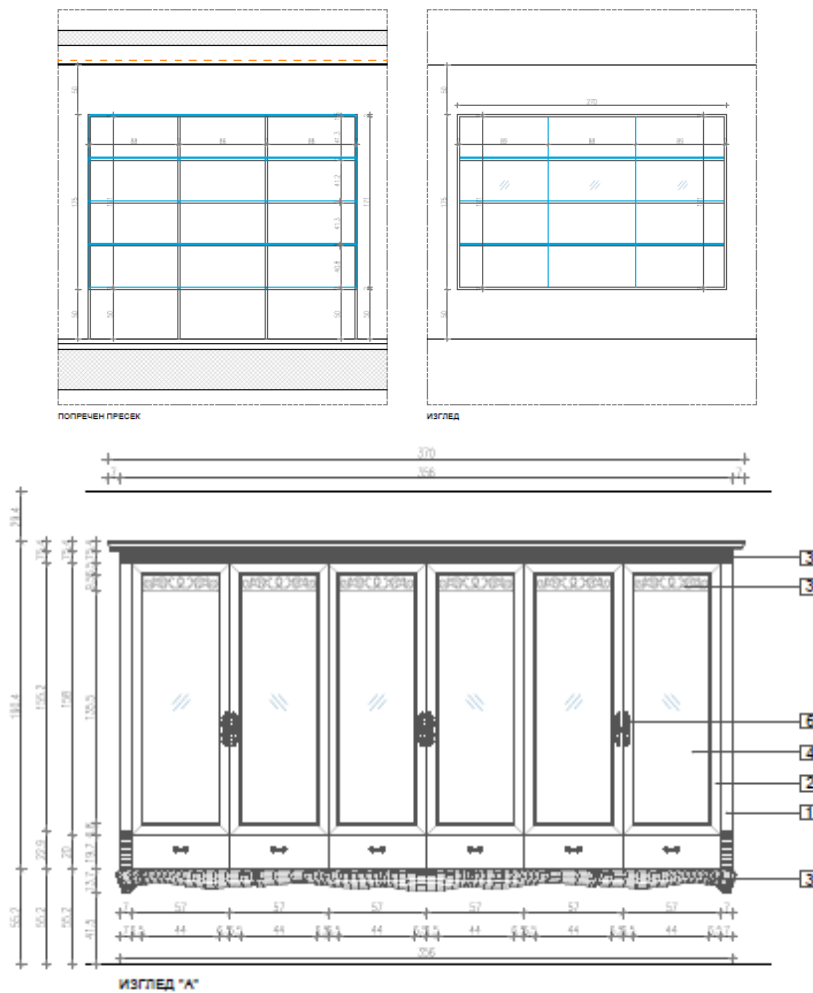


Figure 5. Cabinets with shelves

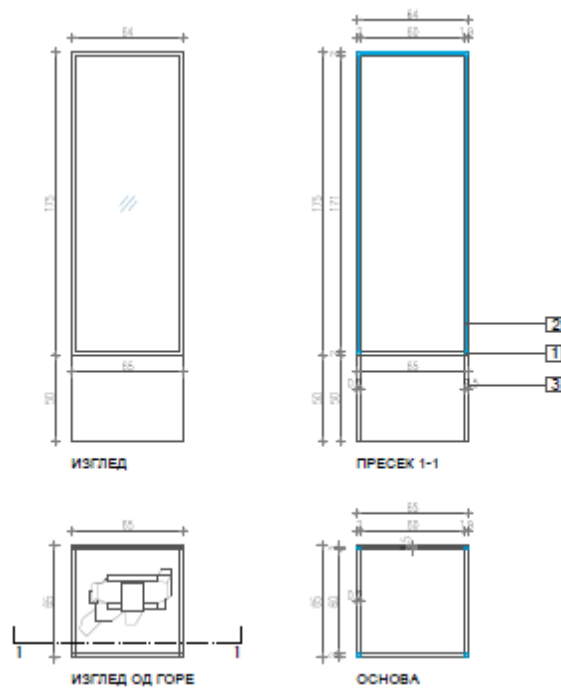


Figure 6. Cabinet for dolls

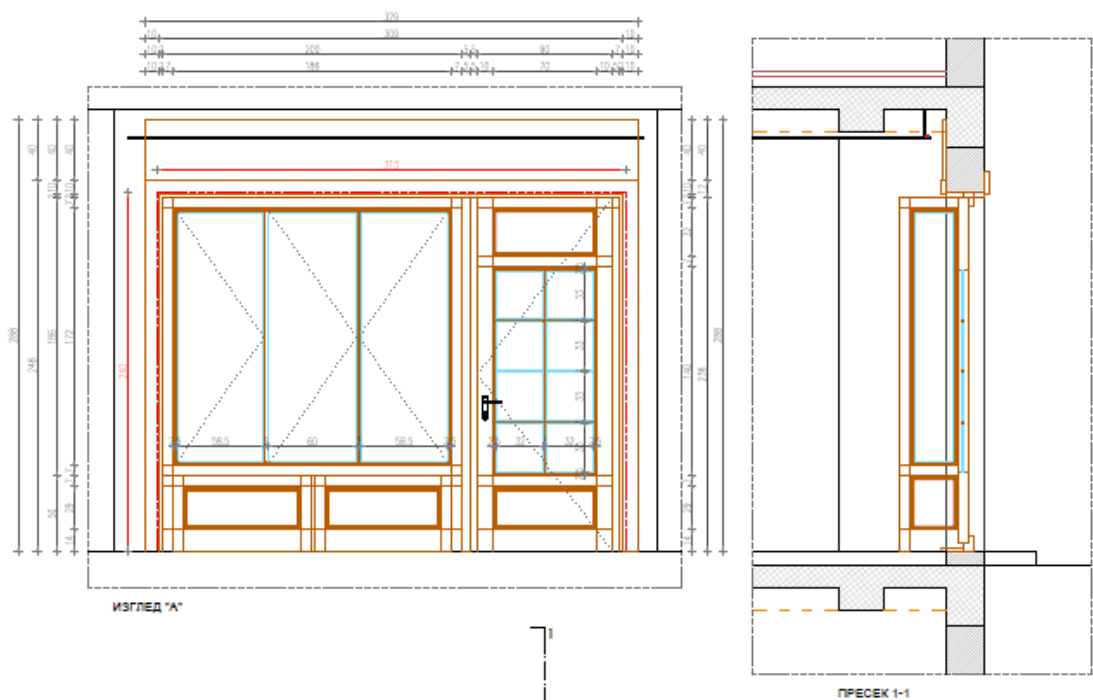


Figure 7. Entrance door with cabinet for shop window

Environmental & Social Management Plan Checklist

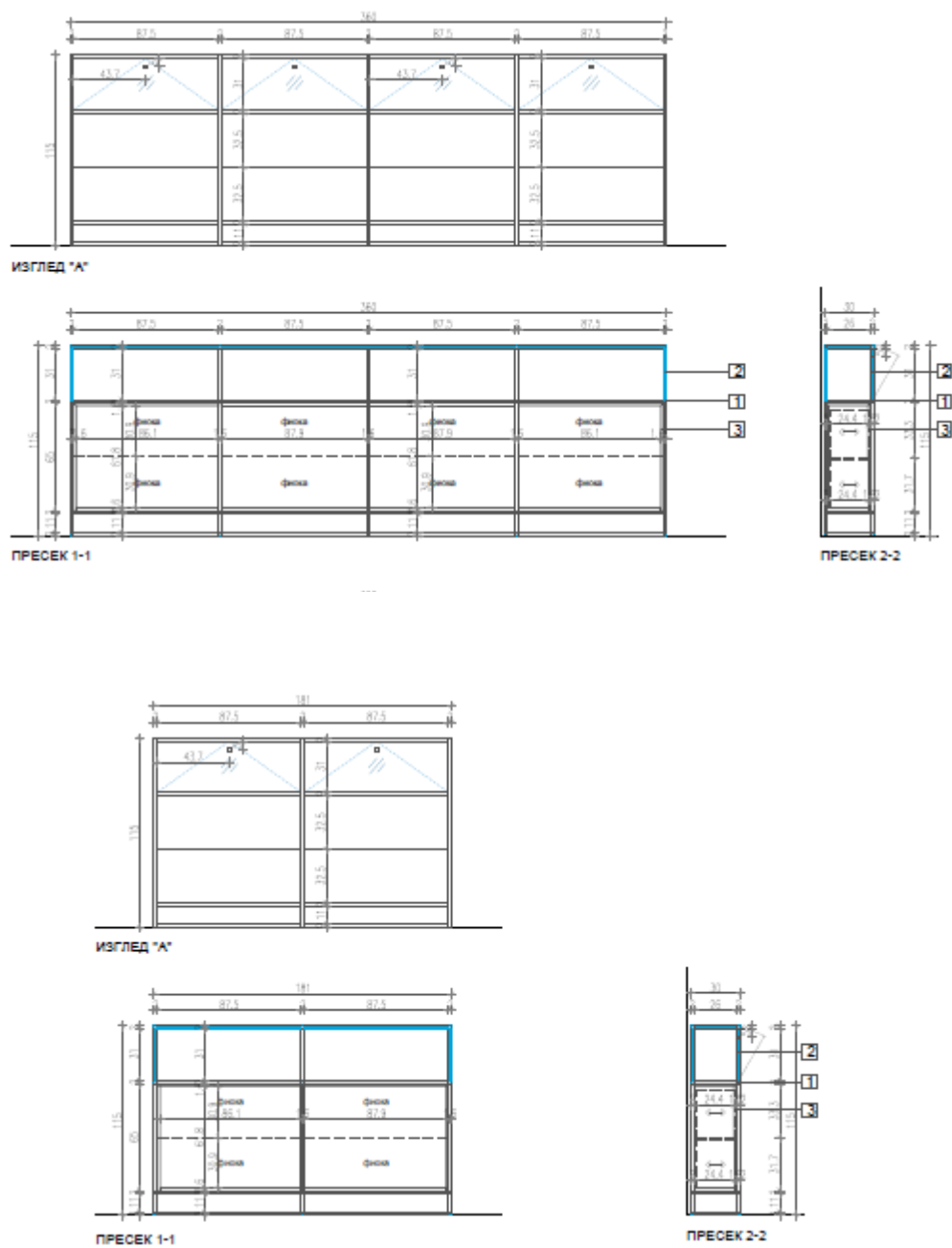


Figure 8. Cabinets with glass

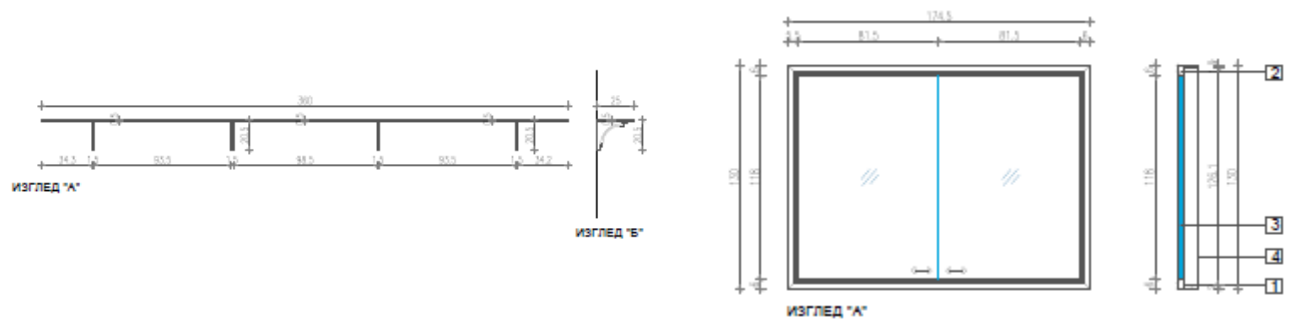


Figure 9. Shelf

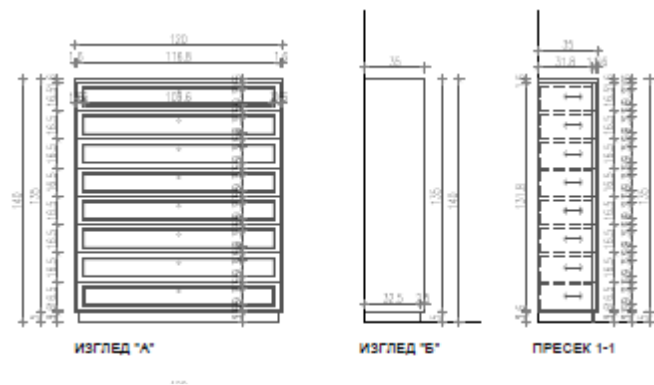


Figure 10. Cabinet with drawers

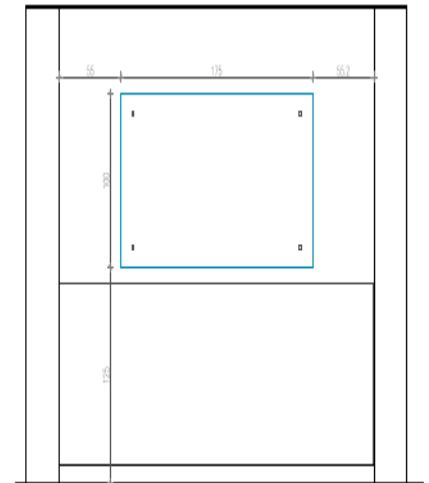


Figure 11. Information board made of glass

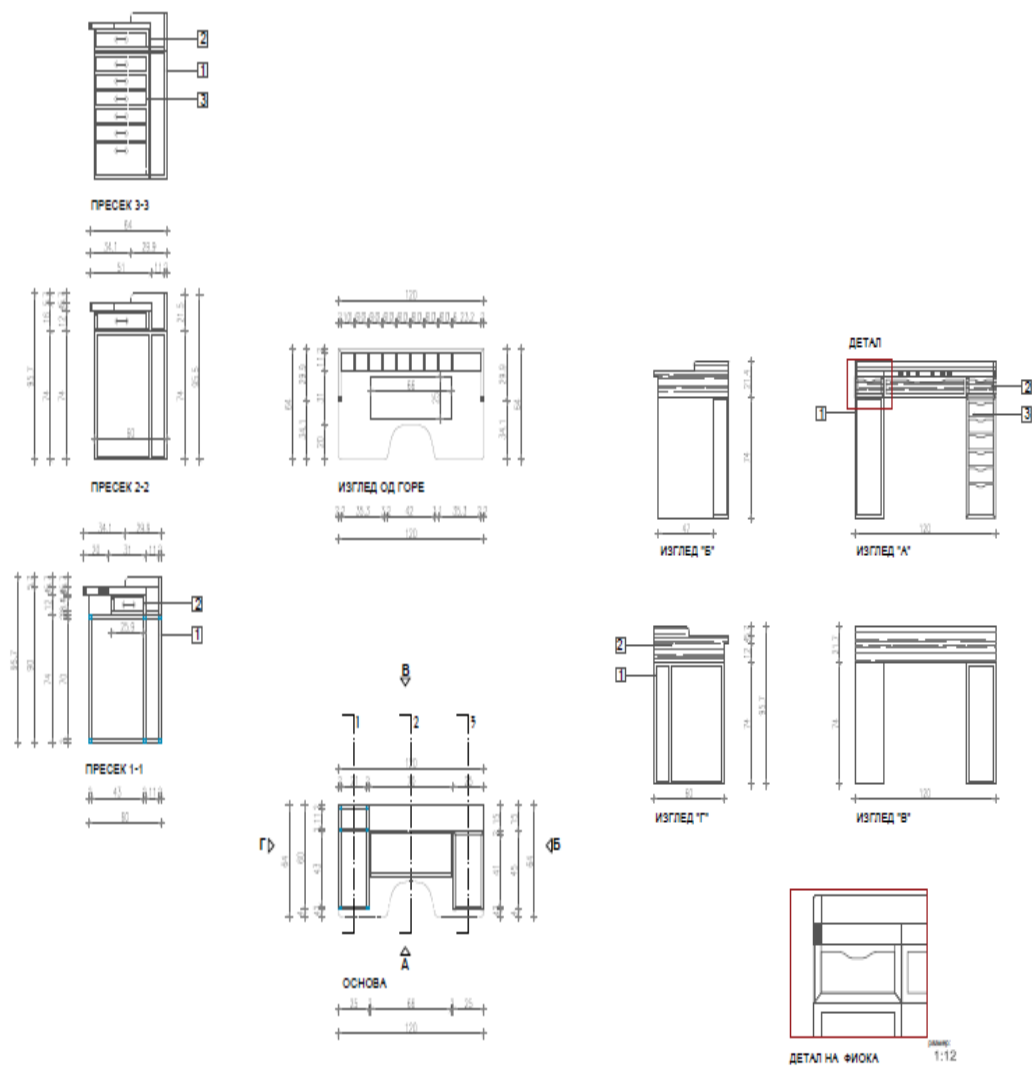


Figure 12. Desk in the workshop

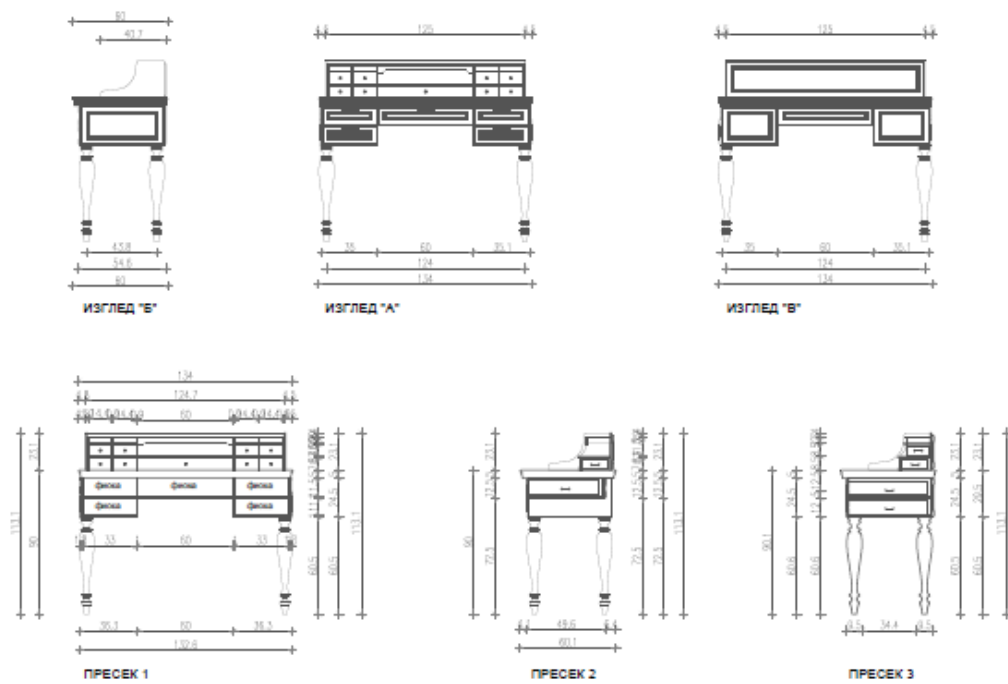


Figure 13. Desk

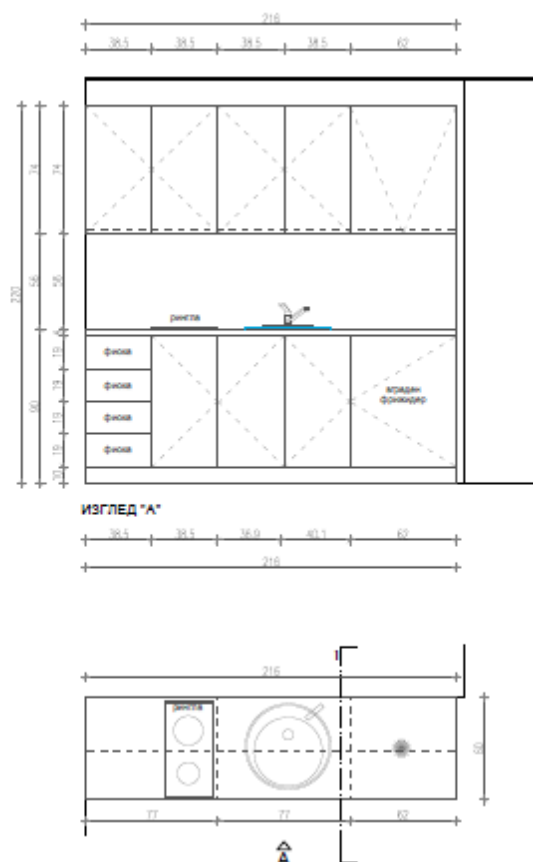


Figure 14. Kitchen

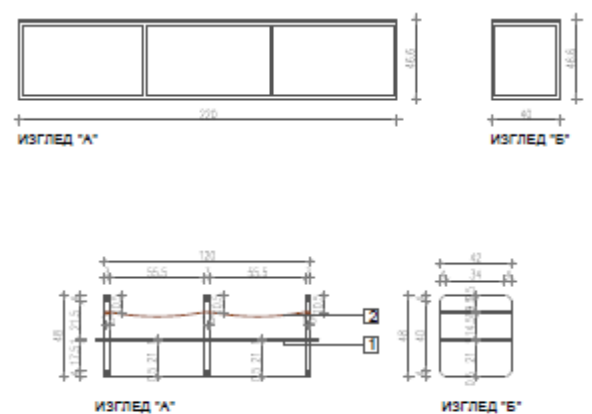


Figure 15. Bench

3. Procurement of tools.
4. Marketing and promotional activities (web-page development, promotional brochures and videos, translations and printing of books, monographs and related writings, etc.).

The planned civil works according to the Bill of Quantities are divided in several categories:

1. Concrete Works

- ✓ Procurement of material and construction of non-load-bearing concrete wall, with smooth panel cladding, with ideal geometric processing, with a thickness of 12 to 15 cm. (59,6M²)

2. Floor Lying Works

- ✓ Procurement of material and construction of concrete floor, from ferro concrete with metal scrapers and joints, for protection against cracking, with all necessary preparations, substrates and finishing and material and construction of metal L-winch moldings, black color or the basement (58,6M²)
- ✓ Procurement of material and construction of terrace floor, with all necessary substrates, preparations and final finishing and material and construction of solid wood moldings, dark walnut for ground floor (45,6M²) and
- ✓ Procurement of material and construction of matched floor, in workshop and kitchen, with all necessary preparations, substrates and final processing and material and construction of solid wood moldings for the floor (44,7M²).

3. Plaster Works

- ✓ Procurement of materials, transport and construction of a dropped ceiling from plasterboard plates d = 1.25 cm., placed on its own metal substructure, filled with insulation 5 cm and banding and smoothing of the joints, with prior preparation for installation of hidden lighting (135,3M²).

4. Wall Processing Works

- ✓ Procurement of material and construction of stone wall cladding, with plastered accent joints and material and construction of wall parapet lining of solid profiled wood, light oak (final processed, treated with oils and tinting agents). (94.2M²)

5. Ceramic Works

- ✓ Procurement, transport and installation of ceramic floor and wall tiles in a bathroom with pre-installed waterproofing. (46,4 M²)

6. Painting Works

- ✓ Purchase of material, transportation and plastering and glazing of walls and ceilings with poly-colour paint, with pre-placement of corner moldings on external broken edges. (135,3m²)

7. Electrical Installations

- ✓ Complete electrical cabling and connection including distribution boards.
- ✓ Complete illumination of all museum elements as well as general illumination of space.

8. Heating and Cooling

- ✓ Supply of material, transport and installation of complete floor heating system including complete fitting and insulation
- ✓ Procurement of material, transport and installation of heat pump run on electricity for heating and cooling on as well as complete connection to the underfloor heating system (MACRW040ZA/PS(E) cooling capacity 10.0 kW, heating capacity 11.0 kW

9. Crafts Works (interior items)

- ✓ Supply, transportation and installation of a wooden door with glass parts that open from the inside, dark walnut.
- ✓ Supply, transportation and installation of a wooden door, dimensions 80x220cm.
- ✓ Making of display cabinet, made of metal profiles with a cross section of 2x2 cm, painted in black matte colour, with glazing on all sides.
- ✓ Making of a stand-alone cabinet for costume display, made of metal profiles with a cross section of 2x2 cm, painted in matt black, pedestal covered with steel sheet, painted in matt black, with glazing on all sides, glass on one side to open.
- ✓ Making of a bench, made of metal profiles, painted in matte black, based on natural leather.
- ✓ Making of a display cabinet for shelves and drawers, body, frame, doors and drawers made of solid light oak wood and dark walnut (final processed, treated with oils and tinting agents). With glazed doors and glass shelves, and a background of dark blue textiles. Lockable metal cladding. Mounted on a suitable substructure for wall hanging.
- ✓ Making of a shelf, made of sheet steel with d = 0.5 cm, painted with matte black colour, wall hanging.
- ✓ Making a chest of drawers, from wood, body and drawers with d = 1.6cm, painted in matte black colour.
- ✓ Making a work desk, upper part of solid wood, light oak (finished, treated with oils and tinting agents), with drawers with opening profile, black part with drawers made of wood, and a leg of metal profiles 2x2cm, painted in matte black.
- ✓ Procurement of materials and construction of a bench, made of metal profiles with a cross section of 2x2 cm, painted with black matte paint, and a seating area made of wood, painted with matte black paint.

- ✓ Construction of kitchen, body, doors and drawers made of MDF, d = 1.6cm, painted with matte black colour with soft closing.

10. Procurement and installation of sanitary items

- ✓ Supply and installation of 2 WC shells, 2 toilet items, 2 washbasins with fountain and full fitting and wooden accessories.

11. Procurement and installation of electrical appliances

- ✓ Supply and installation of LED TV, projector and canvas and personal computers, equipment for the kitchen (fridge, coffee machine, stove etc).

3. Environmental Category

3.1 World Bank Safeguard Policies/Categorisation

LRCP is supported by European Union grant and implemented jointly by Cabinet of the Deputy Prime Minister for Economic Affairs, as the implementing agency of funds, and the World Bank. LRCP has been classified as Category B project, meaning some level of adverse impact can be expected as a result of its implementation, but none of them significant, large-scale or long-term. As a result of this classification OP 4.01 Environmental Assessment is triggered. Subsequently, the CDPMEA prepared Environmental and Social Management Framework (ESMF) to guide environmental due diligence of sub-projects supported through the Component 3 grant scheme, define eligibility and procedures for screening and environmental assessment. All project (and sub-project) activities must be implemented adhering with the ESMF, WB operational policies and procedures and national regulation (the strictest one prevails).

A proposed sub-project is classified as Category B- due to the fact that its future environmental impacts are less adverse than those of Category A and B+ sub-projects considering their nature, size and location, as well as the characteristics of the potential environmental impacts.

The category would require an EA to assess any potential environmental impacts associated with the proposed sub-project, identify potential environmental improvement opportunities and recommended any measures needed to prevent, minimize and mitigate adverse impacts. The scope and format of the EA will vary depending on the sub-project, but will typically be narrower than the scope of EIA, usually in form of ESMP. The scope of ESMP is defined in Annex D of the ESMF. For the sub-projects involving simple upgrades, rehabilitation or adaptation of the buildings, ESMP checklist would be used (template given in Annex F of the ESMF).

B- Category would include sub-projects that also: (a) involve working capital loans which include purchase and/or use of hazardous materials (e.g. petrol) or (b) process improvements that involve purchase of equipment/machinery presenting a significant potential health or

safety risk. According to Macedonian laws, types of sub-projects that fall under category B- do not require EIA.

As object of filigree workshop of Vangel Dereban is part of Old City core of City of Ohrid protected with Law on protection of Old City core of Ohrid as cultural heritage of special importance (Off. Gazette of R. Macedonia 47/11 and 145/15), Cultural Heritage Management Plan has been prepared. Cultural Heritage Management Plan is integral part of this ESMP Checklist and its given in Annex 2 of this ESMP Checklist.

3.2 Environmental assessment according to national legislation

The subproject does not belong to any category of Annex I and Annex II of the Decree on the designation of projects and creations on the basis of which the need for conducting the environmental impact assessment procedure is assessed ("Official Gazette of the Republic of Macedonia" no. / 2005, No. 109/2009). In accordance with the Guidelines for conducting the procedure for determining the need, determining the scope and review of the environmental impact assessment in the Republic of Macedonia for a project that is neither in Annex I and Annex II, the decision regarding the procedure for determining the need for the EIA, is that the EIA is unnecessary.

However, according to the directions of the LRCP PIU, within the environmental screening report, the subproject applicant has submitted a Notice of intent to implement a project to the Ministry of Environment and Physical Planning - Environment Office. The applicant "NOVA CHVRGA export-import Ohrid DOOEL – Subsidiary NOVA CHVRGA 2 Ohrid" has submitted letter with Notice of Intent to the Ministry of Environment and Physical Planning (MoEPP) and has received an answer on 25.10.2019 with Opinion that EIA process is not required and preparation of Elaborate for environmental protection is required. Received Decision for approval of Elaborate for environmental protection is attached in the annex of this ESMP Checklist.

4. Overview of Impacts

As a result of envisaged sub-project activities for the reconstruction of the filigree shop and museum, as well as installation of equipment of "NOVA CHVRGA export-import Ohrid DOOEL – Subsidiary NOVA CHVRGA 2 Ohrid", the following potential impacts were identified:

1. Possible negative safety and health risks and impacts on the local population, drivers and workers (local impacts limited to the location of renovation short term, present only during the implementation phase) due to:

- Lack of occupational health and safety (OHS) measures during the renovation/adaptation works,

- Injury on or near the site of works (e.g. due to lack of protection clothes or equipment, or other safety shortcomings),
- Non-compliance with safety standards and work procedures,
- Inadequate traffic management and pedestrian safety.

2. Possible impact on air quality and air emissions from vehicles transporting materials and equipment on the sub-project location and transporting waste outside of the object (local impact, limited to the location of renovation/adaptation, occurring only during the implementation phase) due to:

- emissions of dust from transport of materials, materials management and civil works,
- emissions of colors, glues and parquet coatings,
- exhaust fumes from vehicles and traffic, as well as causing changes in the existing traffic circulation nearby.

3. Possible vibrations and noise disturbances as a result of transportation vehicles moving through the city to the sub-project location as well as during the works themselves (local impacts limited to the location of the sub-project and only during the implementation phase).

4. Inadequate waste management and untimely collection and transportation of waste. Possible side effects/impacts on the environment and adverse health effects may arise as a result of generation and management of different types of waste (primarily construction waste such as waste plywood, carpet, cloth, sponge, leftovers of gypsum boards as well as wood, metal, glass, plastic, , hazardous waste, e.g. lighting fixtures, paint and glue residues and packaging. Packaging waste (cardboard and nylon) will also be created. These impacts are local. If proper waste management is not envisaged during the operational phase, there is a possibility these negative impacts to become long term with repetitive occurrence but limited to inadequate waste management and untimely collection and transport of the communal waste.

5. Impacts to soil and water from accidental leaks, spills and improper construction and hazardous waste management. However, the envisaged activities are expected to produce only temporary, local and short term adverse environmental impacts limited to the period of renovation. Expected amounts of hazardous solids and liquids used or generated as waste in the course of sub-project implementation are small.

No impact is expected on the natural habitats as the sub-project is not located in natural protected areas and envisaged works are limited to interior renovation/adaptation.

Due to the fact that object of the workshop is part of Old City core of Ohrid all of the possible negative impacts are presented within the Cultural Heritage Management Plan given in annex 3 of this ESMP Checklist.

The preliminary screening revealed that asbestos waste and waste of radioactive lighting rods are unlikely to be generated by this sub-project, however, mitigation measures are provided for these cases as well.

5. Purpose of ESMP Checklist, Disclosure Requirements

The World Bank requires an Environmental Assessment (EA) for projects proposed for funding by the World Bank in order to ensure that they are sustained and sustainable from the environmental point of view and thus improve decision-making. EA is a process whose breadth, depth and type of analysis depend on the nature, scope and potential environmental impacts of the proposed project. The EA assesses the possible environmental risks of the project, as well as their impacts in the area covered by the project.

According to the conducted screening of the Application for Expression of Interest this sub-project was categorized as B-. The subprojects are classified in category B- Potential impacts on the environment are less harmful than sub-projects in categories A and B + given their nature, size and location, as well as the characteristics of potential environmental impacts.

The scope of the environmental assessment for the sub-projects may be different for different sub-projects, but it is usually less than the scope of the Environmental Impact Assessment, most often in the form of an Environmental and Social Management Plan (ESMP). For sub-projects that envisage simple upgrades, renovations or adaptations of objects, the ESMP Checklist is used. The form of the ESMP Checklist is defined by the Environmental and Social Framework for the Local and Regional Competitiveness Project.

ESMP Checklist is applied for minor rehabilitation or small-scale building construction. It provides “pragmatic good practice” and it is designed to be user friendly and compatible with WB safeguard requirements. The checklist-type format attempts to cover typical mitigation approaches to common civil works contracts with localized impacts.

The checklist has one introduction section (Introduction part in which the project is described, part where environmental category is defined, identified impacts, and ESMP Checklist concept explained) and three main parts:

- **Part 1** constitutes a descriptive part (“site passport”) that describes the project specifics in terms of physical location, the institutional and legislative aspects, the project description, inclusive of the need for a capacity building program and description of the public consultation process.
- **Part 2** includes the environmental and social screening in a simple Yes/No format followed by mitigation measures for any given activity.

- **Part 3** is a monitoring plan for activities during project construction and implementation. It retains the same format required for standard World Bank ESMPs. It is the intention of this checklist that Part 2 and Part 3 be included as bidding documents for contractors.

The procedure for disclosure of the ESMP Checklist is as follows: ESMP Checklist in Macedonian, Albanian and English language should be published on the website of the LRCP and the recipient as well as on the websites of the affected municipality and should be available to the public for at least 14 days. It should be available in hard copy in the premises of the LRCP and in the relevant municipalities and / or in the centers of the planning regions. When it is announced, the call for remarks on the documents should be issued along with the available electronic and postal address for sending the remarks. The record of the public hearing (collected comments and questions) contains the basic information about the place, list of present persons and summary of the received remarks and should be included in the final version of the published document.

6. Application of ESMP Checklist

The ESMP Checklist is a document prepared and owned by the beneficiary. The design and implementation process for the envisaged activities in the sub-project will be conducted in three phases:

1. *General identification and scoping phase*, in which the object for renovations/small construction/adaptation is selected and an approximate program for the potential work typologies elaborated. At this stage, Parts 1, 2 and 3 of the ESMP Checklist are drafted. Part 2 of the ESMP Checklist can be used to select typical activities from a “menu” and relate them to the typical environmental issues and mitigation measures. Public consultations take place, ESMP Checklist is finalized.
2. *Detailed planning and tendering phase*, including specifications and bills of quantities for construction works, equipment goods, marketing and other services related to the subproject. **ESMP Checklist will be attached as integral part to the bidding documentation and works contract as well as supervision contract, analogous to all technical and commercial terms, has to be signed by the contract parties.**
3. *During the works implementation phase* environmental compliance (with ESMP Checklist and environmental and health and safety (H&S) regulation) and other qualitative criteria are implemented on the respective site and application checked/supervised by the site supervisor, which include the site supervisory engineer or supervisor of the project appointed for ESMP Checklist implementation supervision. The mitigation measures in Part 2 and monitoring plan in Part 3 are the basis to verify the Contractor’s compliance with the required environmental provisions.

Practical application of the ESMP Checklist will include the achievement of Part I for having and documenting all relevant site specifics. In the second part, the activities to be carried

will be checked according to the envisaged activity type and in the third part the monitoring parameters (Part 3) will be identified and applied according to activities presented in Part 2.

The whole ESMP Checklist filled in table (Parts 1, 2 and 3) for each of the type of work should be attached as integral part of work contracts and as analogue with all technical and commercial conditions which should be signed by the contracting parties.

7. Mitigation Measures

The measures to avoid and reduce/mitigate the identified impacts on the environment, workers and communities, and the social aspects of the sub-project to be applied within the sub-project are, but not limited to, the following:

- Appropriate marking of the site for renovation/adaptation,
- Marking the appropriate location for temporary storage of the construction material on the site,
- All liquid material necessary for the reconstruction (colors, oil, glue) to be stored on an impermeable surface and the personnel trained for a proper action in case of leakage,
- All necessary material will be stored at least 50 m from any water surface,
- Providing warning strips, fences and markings, prohibiting entry of unemployed persons into the warning strips,
- Applying the safety measures to citizens,
- Machines to be run only from experienced and trained personnel,
- Constant presence of fire extinguishers in case of fire or other damage,
- Wearing protective equipment and clothes at all times, fixing scaffolds, and other H&S measures,
- Flammable liquids to be placed and stored exclusively in vessels designed for that purpose.

All workers must be aware of the dangers of fire and firefighting measures and must be trained to deal with fire extinguishers, hydrants and other devices used to extinguish fires, which need to be functional at all time.

The noise level should not exceed 55dB during the day and 45dB at night and the reconstruction work will not be performed during the night (renovation hours 7.00h till 19.00h).

Identification, classification and separate temporary storage (in separate clearly marked waste bins/containers on separate pre-defined location on site and in sufficient number) of different types of waste that could be generated from renovation and proper waste treatment are mandatory. Waste can be transported and landfilled/processed only by licensed companies.

Establish a special traffic regime for the vehicles of the contractor during the period of renovation, with appropriate signaling.

Signing a contract with the service company for regular maintenance, replacement of spare parts, preventive changes, proper maintenance as one of the most important safety function,

regular washing of the vehicles and keep the site clean. The wheels of every vehicle exiting the site to be properly cleaned.

The project activities that will be carried out on the site envisaged for the subproject are carefully planned in order not to disturb the wildlife and not to destroy the natural habitats. None of the materials used will be toxic to the environment, nature and people. There will be no treatment of the wood (with coatings, paint, etc.) and there will be no treatment of the other materials that will be used at location (eg using anti-corrosives). Wood materials will be supplied only from authorized dealers.

The implementation of this subproject is expected to give positive socioeconomic benefits to the region through increased employment opportunities, as well as through improved access and a better market for goods and services. The greatest benefit will be the possibility of developing authentic traditional tourism, the development of local crafts and the development of the local economy. Within this sub-project no land acquisition is planned, same applies for permanent or periodical resettlement.

Mitigation measures described in this section are the general ones, detailed mandatory mitigation measures are provided in the table Mitigation Measures Checklist (Part 3).

8. Monitoring and Reporting Procedures and Distribution of Responsibility

For the monitoring of Contractor's ESMP Checklist implementation, the site supervisor or responsible person appointed by the Beneficiary (in the case of works that do not require engagement of supervising engineer; site supervisor in the further text) will work with Part 2 and 3 of the ESMP Checklist, i.e. the monitoring plan. Part 2 and 3 is developed in necessary detail, defining clear mitigation measures and monitoring which can be included in the works contracts, which reflect the status of environmental practice on the working site and which can be observed/measured/ quantified/verified by the supervisor during the works.

Part 3 practically reflects key monitoring criteria over provided mitigation measures which can be checked during and after works for compliance assurance and ultimately the Contractor's remuneration.

Such mitigation measures include, but are not limited to, the use of Personal Protective Equipment (PPE) by workers in site, dust generation and prevention, amount of water used and discharged in site, waste water treatment, presence of proper sanitary facilities for workers, waste collection of separate types (wood, metals, plastic, hazardous waste, e.g. glue and paint residues and packaging, lightbulbs), waste quantities, proper organization of disposal pathways and facilities, or reuse and recycling wherever possible. In addition to Part 3, the site supervisor should check whether the contractor complies with the mitigation measures in Part 2. Reporting on implementation of practices should be described in the regular report toward PIU.

An acceptable monitoring report from the contractor or site supervisor would be a condition for full payment of the contractually agreed remuneration, the same as technical quality criteria or quality surveys. **The reporting on ESMP Checklist implementation will be quarterly (if not differently agreed with the PIU).** To assure a degree of leverage on the Contractor's environmental performance an appropriate clause will be introduced in the works contracts, specifying penalties in case of noncompliance with the contractual environmental provisions, e.g. in the form of withholding a certain proportion of the payments until the corrective measures are applied and sub-project in compliance, its size depending on the severity of the breach of contract. For extreme cases a termination of the contract shall be contractually tied in.

Implementation of the ESMP Checklist defined measures will be monitored by the supervisor/supervising engineer, the authorized and/or state environmental and communal inspector as well as PIU environmental expert. The implementation of the measures will be followed before commencing work, during the renovation and after its completion.

The applicant (s) is obliged to regularly submit reports on the implementation and monitoring of environmental mitigation measures (ESMP Checklist implementation reports, e.g. in the form of a tabular overview (tables mitigation plan and monitoring plan) with an additional column giving the status of the measures, observations and comments, and Monitoring of the measure (implemented / not implemented, results, observations, comments, concerns, when, etc.).

Institutional & Administrative arrangements

Part 1: Institutional & Administrative	
Beneficiary	NOVA CHVRGA, export-import Ohrid DOOEL – Subsidiary NOVA CHVRGA 2 Ohrid
Country	R. N. Macedonia
Sub-Project title	Workshop of filigree – Vangel Dereban
Scope of sub-project and particular activities	Construction works for interior design Procurement of equipment for the workshop Realization of marketing activities Organization of visits to the workshop Organization of courses
Institutional arrangements (Name and contacts)	Project management*
	NOVA CHVRGA export-import Ohrid DOOEL – Subsidiary NOVA CHVRGA 2 Ohrid. Project Coordinator Nikola Derebanov
Implementation arrangements	Supervision** N/A

Environmental & Social Management Plan Checklist

(Name and contacts)	Nikola Derebanov Mob: 071/321462 e-mail: nderebanov@gmail.com
Site Description	
Name of site	KP15271, KO Ohrid 3
Describe site location Annex 1: Site information (<i>figures from the site</i>) <input checked="" type="checkbox"/> Yes or <input type="checkbox"/> No	The cadaster parcel ("CP15271") is located in the complex number 14 "Bazaar", in the central area of the city of Ohrid, on a pedestrian street. The building has access from the back of the house, in the old part of the city, the settlement Mesokastro, paved with cobblestone.
Who owns the land?	Gjorgji Derebanov
Geographic description	Country: Republic of North Macedonia Region: Southwest region Municipality: Ohrid
Legislation	
Identify national & local legislation & permits that apply to sub-project activity(s)	<ul style="list-style-type: none"> • Law on Construction ("Official Gazette of the Republic of Macedonia" No. 130/09, 124/10, 18/11, 36/11, 54/11, 59/11, 13/12, 144/12, 79/13, 137 / 13, 163/13, 27/14, 28/14, 42/14, 44/15, 129/15 and 39/16) • Law on Environment ("Official Gazette of the Republic of Macedonia" No.53 / 05, 51/05, 81/05, 24/07, 159/08, 83/09, 48/10, 124 / 10,51 / 11, 123 / 12.93 / 13.187 / 13, 42/14, 44/15, 129/15, 192/15, 39/16 and 99/18); • Law on Waters ("Official Gazette of the Republic of Macedonia" No.87 / 08, 6/09, 16109, 83/10, 51 / 11.44 / 12.23 / 13,163 / 13180/14, 146/15 and 52 / 16); • Law on Waste Management ("Official Gazette of the Republic of Macedonia" No.68 / 04, 71/04, 107/07, 102/08, 143/08, 124 / 10.09 / 11.51 / 11.123 / 12 And 163/13); • Rulebook on the general rules for handling communal and other types of nonhazardous waste ("Official Gazette of the Republic of Macedonia" No.147 / 07); • Law on Packaging and Packaging Waste Management ("Official Gazette of the Republic of Macedonia" No.161 / 09, 17 / 11,47 / 11,136 / 11,6 / 12, 39/12 and 163/13); • List of wastes ("Official Gazette of the Republic of Macedonia" No. 100/05); • Law on Chemicals ("Official Gazette of the Republic of Macedonia" No.145 / 10 and 53/11); • Law on Ambient Air Quality ("Official Gazette of the Republic of Macedonia" No. 67/04, 92/07, 35/10, 47/11, 100/12 and 10/15); • Law on protection against noise in the environment ("Official Gazette of the Republic of Macedonia" No. 79/07, 124/10 and 47/11);

	<ul style="list-style-type: none"> • Rulebook on limit values for the level of noise in the environment ("Official Gazette of the Republic of Macedonia" No.147 / 08); • A decision on determining in which cases and under what conditions the peace of the citizens against harmful noise is considered ("Official Gazette of the Republic of Macedonia" No.1 / 09); • Law on Nature Protection ("Official Gazette of the Republic of Macedonia" No. 67/04, 14/06, 84/07, 35/10, 47 / 11,148 / 11,59 / 12,13 / 13,163 / 13 and 41 / 14); • Law on Protection and Rescue ("Official Gazette of the Republic of Macedonia" No. 36/04, 49/04, 86/08, 124/10 and 18/11); • Law on the Protection of Cultural Heritage consolidated text (Official Gazette of the Republic of Macedonia No. 20/04, 71/04, 115/07, 18/11, 148/11, 23/13, 137/13, 164 / 13, 38/14, 44/14, 199/14, 104/15, 154/15, 192/15 and 39/16) • Law on protection of Old City core of Ohrid as cultural heritage of special importance (Off. Gazette of R. Macedonia 47/11 and 145/15)
Public Consultation	
Identify when / where the public consultation process took place and what were the remarks from the consulted stakeholders	<p>The procedure for publicly consulting the ESMP Checklist) is following: The ESMP Check list has to be published on the LRCP web page, the Agency for promotion and support of tourism web page and the web page of the beneficiary or Municipality of Ohrid where the project will be realized. The document has to be published and available for the public at least 14 days.</p> <p>Also, the document has to be available in hard copy in the LRCP office and the municipal premises.</p> <p>When it is announced, the call for comments and remarks on the documents should be issued along with the available electronic and postal address for sending the notes.</p> <p>The minutes of meeting from the public consultation (collected comments and questions) contains: basic information about the place of the public consultation, list of participants and short summary of the participants comments, that will be included in the final version of the document.</p>
Institutional Capacity Building	
Will there be any capacity building?	<input checked="" type="checkbox"/> No or <input type="checkbox"/> Yes, if Yes, Annex 2 includes the capacity building information
Table 24	

Environmental and social screening

Part 2: Environmental /Social Screening			
Will the site activity include/involve any of the following?	Activity	Status	Additional references
	A. General requirements	<input checked="" type="checkbox"/> Yes <input type="checkbox"/> No	See Section A below
	B. Building renovation/adaptation	<input checked="" type="checkbox"/> Yes <input type="checkbox"/> No	See Section A and B below
	C. Small construction	<input type="checkbox"/> Yes <input checked="" type="checkbox"/> No	See Section A and C below
	D. Hazardous or toxic materials ¹	<input checked="" type="checkbox"/> Yes <input type="checkbox"/> No	See Section A, and D below
	E. Traffic and Pedestrian Safety	<input checked="" type="checkbox"/> Yes <input type="checkbox"/> No	See Section A,B and E below
	F. Procurement of chemicals	<input checked="" type="checkbox"/> Yes <input type="checkbox"/> No	See Section F below
Table 2			

¹ Toxic / hazardous material includes and is not limited to asbestos, toxic paints, removal of lead paint, etc.

Mitigation measures Checklist

Mitigation measures checklist		
Activity	Parameter	Mitigation measures checklist
A. General Requirements	Notification and Worker Safety	<ul style="list-style-type: none"> a) Providing information to local population about the scope and time of commencement and time of duration of construction activities by preparing Notification which will be placed on the municipality notice board and on the municipal web page and through other means, if needed, to ensure the local population is well informed; b) Local construction and environmental/nature protection inspectorates are informed of works before the start; c) All needed permits/opinions/permissions are obtained before the commencement of works (including construction and other); d) All work will be carried out in safe and disciplined manner; e) Workers' personal protective clothes and equipment are available in sufficient quantities and are worn/used at all times; f) Workers must be adequately trained, certified and experienced for the work they are performing (e.g. for works in heights); g) Open pits are covered and clearly marked when not worked on; h) Ensure the appropriate marking and informational board of the reconstruction site; i) Marking out the site for temporal storage of the reconstruction material near the site; j) Providing warning tapes, fences and appropriate signs informing danger, key rules and procedures to follow; k) Forbidden entrance of unemployed persons within the warning tapes and fences when/where deem needed; l) The surrounding area to be kept clean at all time; m) Machines should be handled only by experienced and appropriately trained personnel, thus reducing the risk of accidents;

Mitigation measures checklist		
		<p>n) All workers must be familiar with the fire hazards and fire protection measures and must be trained to handle fire extinguishers, hydrants and other devices used for extinguishing fires;</p> <p>o) Devices, equipment and fire extinguishers should be always functional, so in case of need they could be used rapidly and efficiently. First aid kits should be available on the site and personnel trained to use it;</p> <p>p) Procedures for cases of emergency (including spills, accidents, etc.) are available at the site.</p> <p>q) Sanitary facilities (toilets) must be provided for workers.</p> <p>r) Purchased equipment will be installed and used respecting all safety measures prescribed by the producer of equipment and best practices.</p>
	Chance Findings	<p>a) The procedures will follow the national legislation for chance findings</p> <p>b) In the case there would be chance findings works will be stopped and authorized competent authority (Ministry of Culture and regional museum and institute) informed within 24 hours;</p> <p>c) The contractor will further follow competent authorities' instructions and the works will recommence upon their approval;</p> <p>d) Working area, site camp, etc. should be located away from the heritage and archeological sites;</p> <p>e) Adequate care and awareness rising shall be taken to enlighten construction workers on the possible unearthing of archeological relics;</p> <p>f) All findings will be kept intact in case of a chance find, prior to the examination of the Institute for the protection of monuments of culture and Museum.</p> <p><i>Please see separate Cultural Heritage Management Plan given as annex to this ESMP Checklist</i></p>
	Air quality	<p>a) Construction site, transportation routes and materials handling sites should be water sprayed on dry and windy days.</p> <p>b) The building will have a façade fence during the reconstruction, to prevent dust emission.</p> <p>c) Construction materials should be stored in appropriate places covered to minimize dust.</p> <p>d) Vehicle loads likely to emit dust must be covered.</p> <p>e) All vehicle tires are washed before exiting the project site, to prevent dust dispersal outside the project site.</p> <p>f) Restriction of the vehicle speed to the reconstruction location.</p>

Mitigation measures checklist		
		<ul style="list-style-type: none"> g) Roads are regularly swept and cleaned at critical points. h) Keep the topsoil and stockpiles separate. Protect with sheets/fences in the case of windy weather. i) Locate stockpiles away from drainage lines, natural waterways and places susceptible to land erosion. j) All loads of soil are covered when being taken off the site for disposal. k) Ensure all transportation vehicles and machinery have been equipped with appropriate emission control equipment, regularly maintained and attested. l) Ensure all vehicles and machinery use petrol from official sources (licensed gas stations) and on fuel determined by the machinery and vehicles producer. m) There will be no excessive idling of construction vehicles at sites.
	Noise	<ul style="list-style-type: none"> a) The local population will be timely notified about the start and the duration of the reconstruction activities. b) As it is a urban residential area the level of noise should not exceed 55dB during the day and evening and 45dB during the night. c) The reconstruction work will not be permitted during the nights, the operations on site shall be restricted from 7.00h to19.00h (agreed in the permit). d) During the operations the engine covers of generators, air compressors and other powered mechanical equipment should be closed, and equipment placed as far away from residential areas as possible. e) Pumps and other mechanical equipment should be effectively maintained. f) A grievance mechanism will be put into practice and the local population informed about it.
	Water and Soil Quality	<ul style="list-style-type: none"> a) Prevent hazardous spillage coming from waste (temporary waste storage should be leakage protected and those for hazardous or toxic waste equipped with secondary containment system, e.g. double walled or bund containers). b) If hazardous spillage occurs, curb and remove it, clean the site and follow procedures and measures for hazardous waste management.

Mitigation measures checklist		
		<ul style="list-style-type: none"> c) In the case of any run-off, the area possibly contaminated by hazardous substances shall be collected on site to a temporary retention basin and transported to an adequate licensed waste water treatment plant. d) Install/provide and maintain proper sanitary facilities (mobile toilets) for workers. These mobile toilets should be maintained by a licensed company. The wastewater from these sources should be transported to proper waste water treatment facilities. e) Prevent hazardous spillage coming from tanks (mandatory secondary containment system, e.g. double walled or bund containers), construction equipment and vehicles (regular maintenance and checkups of oil and gas tanks), machinery and vehicles can be parked (manipulated) only on asphalted or concrete surfaces with surface runoff water collecting system. f) Working site run-off water potentially containing suspended matter should be filtered before discharge to natural flows. g) Water, and other components, in concrete mixture shall be clean and free of harmful chemicals. h) All potential contaminants on site should be placed on an impermeable surface, at least 50 m from any surface water.
	Waste management	<p>The good waste management practice will be applied including:</p> <ul style="list-style-type: none"> a) Identification of the different waste types that could be generated at the reconstruction site and its classification according to Law on Waste (soil, sands, bottles, food, parts of pipes, paper, crushed concrete, etc.). b) Containers for each identified waste category are provided in sufficient quantities and positioned conveniently. c) Waste collection and disposal pathways and licensed landfills/processing plants will be identified for all major waste types expected from demolition and reconstruction activities. For management of hazardous wastes, instructions/guidelines from Ministry of Environmental Protection and Physical Planning will be sought and followed.

Mitigation measures checklist		
		<ul style="list-style-type: none"> d) Mineral (natural) construction and demolition waste will be separated from general, organic, liquid and chemical waste by on-site sorting and temporarily stored in appropriate containers. Depending of its origin and content, mineral waste will be reapplied to its original location or reused. e) All construction waste will be collected and disposed properly by licensed collectors and to the licensed landfills (or licensing processing plant). f) The records of waste disposal will be regularly updated and kept as proof for proper management, as designed. g) Whenever feasible the contractor will reuse and recycle appropriate and viable materials. Discarding any kind of waste (including organic waste) or waste water to the surrounding nature or water-bodies is strictly forbidden. h) Collect, transport and final disposal/processing of the communal waste by a licensed company; i) The construction waste should be promptly removed from the site and re-used if possible; j) The incineration of any waste at site or in unlicensed plants and locations is strictly prohibited. k) Existing air-conditioning units are not to be refilled or emptied. If discarded, these must be handled by specialized licensed companies. l) The potential hazardous waste (engine oils, vehicle fuel) should be collected separately and an agreement should be made with a subcontractor who will have authorization to collect and transport (and temporarily store, if applicable) the hazardous waste. Hazardous waste will be processed or disposed only to processing plants/landfills with valid licenses.

Mitigation measures checklist		
	Safety of traffic	<ul style="list-style-type: none"> a) Traffic regulation plan is prepared and implemented in coordination with Municipality and competent authority (traffic police); b) Traffic will be regulated in the safe manner. Safety of pedestrians will be ensured by use of safe-passages. c) Safety and regulation notification and traffic signs will be used appropriately.
B. Building Renovation	Materials management	<ul style="list-style-type: none"> a) No new materials containing asbestos or lead-based paint will be used. b) Coarse aggregate in concrete applied and used in rehabilitation need to conform to durability and fraction requirements. The aggregate must be virgin (not used previously) and preferably locally produced. c) Mineral resources (aggregate, sand, gravel, etc.) are procured only from licensed companies with valid concessions for extraction/exploitation. The companies can prove H&S measures and environmental management is in place. d) If wood is to be used the origin of this material must be certified. Wood material originating from illegal logging must be avoided at all cause.
	Community Safety	<ul style="list-style-type: none"> a) Ensure safety of building users e.g. provide safe passages and protection from falling objects. b) Timely inform users of premises and neighboring communities of upcoming works. c) In the case the traffic will be interrupted, organize alternative ruts in cooperation with the Municipality.
C. Small construction	Materials management	<ul style="list-style-type: none"> a) No new materials containing asbestos or lead-based paint will be used. b) Coarse aggregate in concrete applied and used in rehabilitation need to conform to durability and fraction requirements. The aggregate must be virgin (not used previously) and preferably locally produced. c) Mineral resources (aggregate, sand, gravel, etc.) are procured only from licensed companies with valid concessions for extraction/exploitation. The companies can prove H&S measures and environmental management is in place.

Mitigation measures checklist		
	Soil erosion	<ul style="list-style-type: none"> a) Vehicles and machinery can be parked, washed and maintained only at designated areas with impermeable surface with a collection and treatment system (oil and grease separator), b) Protection of sediments spread by fences and barriers. c) Strip soil only as necessary and store/replace reuse post construction. d) Use of antifreeze and/or accelerator compounds is not allowed. e) Protect and restore non-construction areas. Design slopes and retaining structures to minimize risk, provide appropriate drainage and vegetation cover. f) Carry out surface drainage works to divert the rainwater that would erode the soil. g) Apply storm water management to minimize erosion and offsite sediment delivery to receiving waters. h) Parking site has to be respected following the defined place.
	Community Safety	<ul style="list-style-type: none"> a) Ensure safety of building users e.g. provide safe passages and protection from falling objects. b) Timely inform users of premises and neighboring communities of upcoming works. i) In the case the traffic will be interrupted, organize alternative ruts in cooperation with the Municipality.
D. Hazardous materials	Asbestos waste management and waste lighting rods	<ul style="list-style-type: none"> (a) If asbestos is found on the site, environmental inspection and other competent authorities (e.g. MoEPP) will be notified and instruction requested. The asbestos must be removed or properly encapsulated/bind. (b) Asbestos will be removed, managed, transported and disposed in line with the national regulation and best practices (breaking prevented, water sprayed against dusting, waste asbestos packed in hermetically closed packages, temporary storage in closed facilities, properly marked in all three languages). (c) Workers handling asbestos will wear protective clothes, adequate respirators/masks (depending on the type of asbestos). (d) Only licensed companies for managing asbestos can be engaged for these works! (e) Removed asbestos cannot be reused! (f) In the case radioactive rods were identified on the site, a company licensed for its removal must be engaged.
	Toxic and hazardous solids and liquids	<ul style="list-style-type: none"> a) Ensure proper handling of lubricants, fuel and solvents by secured storage and following MSDS.

Mitigation measures checklist		
	management (including waste)	<ul style="list-style-type: none"> b) Temporarily storage on site of all hazardous or toxic substances will be in safe containers labeled with details of composition, properties and handling information. c) All hazardous substances should be kept in a leak-proof container to prevent spillage and leaking. This container should have a secondary containment system, e.g. double walls, or similar. Secondary containment system must be free of cracks, able to contain the spill, and be emptied quickly. d) The containers with hazardous substances must be kept closed, except when adding or removing materials/waste. They must not be handled, opened, or stored in a manner that may cause them to leak. e) The containers holding ignitable, hazardous or reactive wastes must be located at least 15 meters from the facility's property line and at least 30 meters from the water line. f) Hazardous waste will be collected, transported and disposed by a licensed company contracted by the Contractor of works. The waste is to be transported by specially licensed carriers and disposed in a licensed facility. Containers for all types of envisaged (and occurring) hazardous wastes on the site have to be available and properly marked (name and assigned waste key-code). g) No lead paint, asbestos or other materials hazardous to human health will be used. h) All potentially hazardous materials should be kept and handled on an impermeable surface.
E. Procurement of chemicals	Improper or lack of proper management could increase the environmental and occupational safety risks and health risks to all citizens	<ul style="list-style-type: none"> a) Chemicals are managed, handled and stored in accordance to Materials Safety Data Sheet (MSDS). b) Chemicals are purchased from authorized dealer. c) Chemicals are managed and handled only by authorized and adequately trained and experienced personal/staff .
Table 3. Mitigation measures checklist		

Monitoring Plan

Part 3: Monitoring plan							
Phase	What <i>(Parameter will be monitored?)</i>	Where <i>(Is the parameter to be monitored?)</i>	How <i>(Is the parameter to be monitored?)</i>	When <i>(Define the frequency / or continuity?)</i>	Why <i>(Is the parameter being monitored?)</i>	Cost <i>(If not included in project budget)</i>	Who <i>(Is responsible for monitoring?)</i>
During activity preparation	All required permits are obtained before works start.	At the city administration	Inspection of all required documents	Before works start	To ensure the legal aspects of the rehabilitation activities	/	Contractor; Supervisor of the construction works; Construction inspector, LRCP PIU
	Public and relevant institutions are notified	Contractor's premises	Inspection of all necessary documents	Before works start	To ensure public awareness	/	Contractor; Supervisor of the construction works;
	Safety measures for workers, employees and visitors	On site	Visual checks and reporting	Before works start	To prevent health and safety risks – mechanical injuries and to provide safe access and mobility	/	Contractor, Supervisor
During activity implementation	Safe traffic flow	On site	Visual checks and reporting	During equipment delivery	To ensure coordinated traffic flow	/	Contractor, Supervisor

Environmental & Social Management Plan Checklist

Part 3: Monitoring plan							
Phase	What (Parameter will be monitored?)	Where (Is the parameter to be monitored?)	How (Is the parameter to be monitored?)	When (Define the frequency / or continuity?)	Why (Is the parameter being monitored?)	Cost (If not included in project budget)	Who (Is responsible for monitoring?)
	Work safety	On site	Visual checks and reporting Unannounced inspections during work	Unannounced controls during work	To prevent health and safety risks – mechanical injuries and to provide safe access and mobility	/	Supervisor
	Site is well organized: fences, warnings, sign postage in place.	On site	Inspection	Unannounced controls during work	To prevent accidents /	/	Contractor, Supervisor
	Collection and transportation of hazardous waste (if any)	At the safe temporary location on construction site in separate waste containers, on impermeable surface	Inspection of the transport lists and the conditions of the storage space	Before the transportation of the hazardous waste (if any)	To improve the waste management at local and national level/ Hazardous waste do not be disposed to any landfill	/	Authorized company for collecting and transportation of hazardous waste (if any), Authorized environmental inspector, Construction inspector, LRCP EE
	Collection, transport and final disposal of the solid waste	At and around the site	Visual monitoring and inspection of the transport lists of the contractor	Daily level after the collection and transportation of the solid waste	Do not leave the solid waste on the construction site and to avoid negative impact to the local environment and the local inhabitants health	/	Contractor; Supervisor of the construction works; Authorized environmental inspector, Construction inspector, LRCP EE

Environmental & Social Management Plan Checklist

Part 3: Monitoring plan							
Phase	What <i>(Parameter will be monitored?)</i>	Where <i>(Is the parameter to be monitored?)</i>	How <i>(Is the parameter to be monitored?)</i>	When <i>(Define the frequency / or continuity?)</i>	Why <i>(Is the parameter being monitored?)</i>	Cost <i>(If not included in project budget)</i>	Who <i>(Is responsible for monitoring?)</i>
	Air pollution parameters of dust, particulate matter	At and around the site	Sampling by authorized agency	Upon complaint or negative inspection finding	To ensure no excessive emission during works	/	Supervisor
	Level of noise and vibration	At and around the site	Monitoring on the level of noise dB (with suitable equipment - Sound Pressure Meter)	Upon complaint or inspection finding	To determine whether the level of noise is above or below the permissible level of noise	/	Contractor; Accredited company for measuring the level of provided by the contractor; Authorized environmental inspector, Construction inspector, LRCP EE
During Operation phase	Waste management	At and around the site	Waste is properly collected, sorted and stored	Daily	To prevent accumulation of waste	Variable and not included in the project budgeted	Authorised waste collection company
Table 4							

Annex EMP Checklist Annex 1: Site information (figures from the site)



An aerial photograph of a city block. Yellow and red outlines are drawn on the image to highlight specific buildings and lots. The highlighted areas include a large building on the left, a smaller building in the center, and a large building on the right. The outlines are drawn in a way that suggests a specific area of interest or a specific set of buildings.



Annex 2 Competent authority (Mayor of Municipality of Ohrid) Decision for approval of environmental protection elaborate



ОПШТИНА ОХРИД
Ул.Димитар Влахов бр.57
Охрид

Сектор за урбанизам и заштита на животната средина
Одделение за заштита и влијание врз животната средина

Уп. број **21-498** од **02.11.2010** год.
ОХРИД

Врз основа на член 88 од Законот за општата управна постапка (Сл. весник на Република Македонија бр.38/05,45/15) и член 24 став 7 од Законот за животна средина(Службен весник на Република Македонија бр. 53/05,81/05,24/07 и 159/08 83/09, 48/10, 124/10, 51/11, 123/2012, 93/13, 42/14, 44/15, 129/15 и 39/16), а во врска со „Уредбата за изменување на уредбата за дејностите и активностите за кои задолжително се изработува елаборат, а за чие одобрување е надлежен Градоначалникот на општината, Градоначалникот на градот Скопје и Градоначалникот на општините во градот Скопје“(Службен весник на Република Македонија“ бр. 80/09,32/12), постапувајќи по Барањето на ДУТУ „Нова Чврга“ увоз-извоз Охрид ДООЕЛ, подружница „Нова Чврга 2“, Охрид, ул.,Св. Климент Охридски“ бр.40 Охрид на КП 15271 КО Охрид 3, Охрид, Градоначалникот на Општина Охрид, донесе

РЕШЕНИЕ

За одобрување на елаборат за заштита на животна средина

1. **СЕ ОДОБРУВА** Елаборатот за заштита на животната средина Уп.бр.1-21-498 на ДУТУ „Нова Чврга“ увоз-извоз Охрид ДООЕЛ, подружница „Нова Чврга 2“, Охрид, ул.,Св. Климент Охридски“ бр.40 Охрид на КП 15271 КО Охрид 3, Охрид, за Работилница и музеј на филигранот Вангел Дербан за производство на накит, бижутерија и сродни производи
2. Од доставената документација констатирано е дека од работата на Работилницата и музеј на филигранот Вангел Дербан за производство на накит, бижутерија и сродни производи нема да има значителни влијанија врз животната средина.
3. Во однос на генерираната бучава, и емисиите во воздух, инвеститорот се задолжува да ги почитува „Законот за заштита од бучава во животната средина“(сл. Весник на РМ бр 79/07, 163/13), „Законот за квалитетот на амбиенталниот воздух“(сл. Весник на РМ бр. 67/04, 92/07,35/10, 47/11, 163/13), „Законот за заштита на природата“(Сл. Весник на РМ бр.67/04, 14/06,84/07, 35/10, 47/11, 148/11, 59/12, 13/13 и 163/13), „Законот за води“(Сл. Весник на РМ бр.87/08, 6/09, 161/09, 83/10, 51/11, 44/12, 23/13 и 163/13), а со создадениот отпад да постапува согласно „Законот за управување со отпад“(сл. Весник на РМ бр.9/11, 123/12, 147/13, 163/13).
4. Исто така инвеститорот се задолжува во случај на промена на начинот и обемот на работата да го информира надлежниот орган, односно општина Охрид и без исклучоци да се придржува кон пропишаните мерки за заштита предвидени во Елаборатот за оценка на влијанието врз животната средина, како и кон дополнителните решенија во колку низ работата на инсталацијата се покаже потреба од зголемен обем и вид на превенција.
5. Во случај на непридржување кон пропишаниот режим и мерки за заштита ќе се применат одредбите на Законот за животна средина во делот на Делоокругот на надзор на овластениот инспектор и делот на прекршочни одредби.
6. Ова решение влегува во сила со денот на донесувањето.

Образложение

ДУТУ „Нова Чврга“ увоз-извоз Охрид ДООЕЛ, подружница „Нова Чврга 2“, Охрид, ул., Св. Климент Охридски“ бр.40 Охрид на КП 15271 КО Охрид 3, Охрид, до Градоначалникот на Општина Охрид поднесе барање Уп. бр.1- 21-498 од 16.10.2020г. за одобрување на Елаборат за заштита на животната средина за Работилницата и музеј на филигранот Вангел Дербан за производство на накит, бижутерија и сродни производи

Елаборатот е изготвен од страна на Консултантското друштво ЕНВИРО РЕСУРСИ ДОО Скопје и е во целост изработен согласно Правилникот за формата и содржината на Елаборатот за заштита на животната средина, постапката за нивно одобрување како и начинот на водење на Регистарот за одобрени елаборати („сл. Весник на РМ бр. 44/13, 111/14).

Предметниот Елаборат е составен од текстуален дел, графички прилози и анализирани се сите неопходни компоненти, изворите и видовите на можни деградации и загадувања врз основа на што се димензионирани и дефинирани мерките за заштита на основните медиуми. Според наша оценка, проектираните заштитни мерки се апликативни и во целост ќе ги задоволат основните барања.

Врз основа на изнесеното, одлучено е како во диспозитивот на ова Решение.

Таксата по членот 2, тарифен бр. 33-а од „Законот за измена и дополна на Законот за административни такси“ (Сл. Весник на РМ бр. 24/03) е наплатена во износ од 600,00 денари и приложена кон барањето.

Упатство за правно средство:

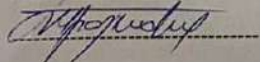
Против ова Решение подносителот може да поднесе жалба до Државната комисија за одлучување во управна постапка и постапка од работен однос во втор степен во рок од 15 дена од денот на приемот на Решението.

Жалбата се тексира со административна такса во износ од со 250,00 ден.

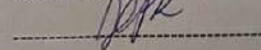
Доставено до :

- Барател (2 примероци)
- Овластен инспектор за животна средина
- Архива

Изготвил :Советник
Јасминка Т.Момироска



Одобрил: Рак. на одделение
Хавза Р. Каџел



ГРАДОНАЧАЛНИК
Д-р Константин Георгиевски



Environmental & Social Management Plan Checklist

Annex 3 Cultural Heritage Management Plan

CULTURAL HERITAGE MANAGEMENT PLAN
FOR THE PROJECT
" WORKSHOP OF THE FILIGREE - VANGEL DREBAN"

APPLICANT: NOVA CHVRGA IMPORT EXPORT DOOEL OHRID

– SUBSIDIARY NOVA CHVRGA 2 OHRID

1. Introduction and Information

The Local and Regional Competitiveness Project (LRCP) is a four-year investment operation, supported by the European Union and, using IPA 2 funds, and is intended for competition and innovation in Macedonia. LRCP is managed as a Hybrid Trust Fund and consists of four components and implemented by the World Bank and the Government of the Republic of Macedonia. The project will provide financial investment and capacity building to support sectoral growth, investment in destinations and development of a specific destination. At regional and local level, the Project will support selected tourist destinations in the country through a combination of technical support to improve destination management, infrastructure investment and innovation investment. The investments will be realized through a grant scheme for stakeholders in regional tourism, such as municipalities, institutions, NGOs and the private sector. The Cultural Heritage Management Plan is part of the Environmental and Social Aspects Management Plan (ESAMP) which has been prepared for the planned activities within the project "Filigree Workshop - Vangel Dereban". ESAMP is a description of the project, technical details, area and location, on which bases it assesses the risks to the environment and the social environment as well as the risks related to immovable cultural heritage. The implementation of mitigation and monitoring measures that recognize the identified risks and issues in the ESAMP, is mandatory.

Our company has prepared a project that will be realized on a location in the old part of the city of Ohrid, in the so-called complex "Charshija". The pictures given below depict the existing situation.



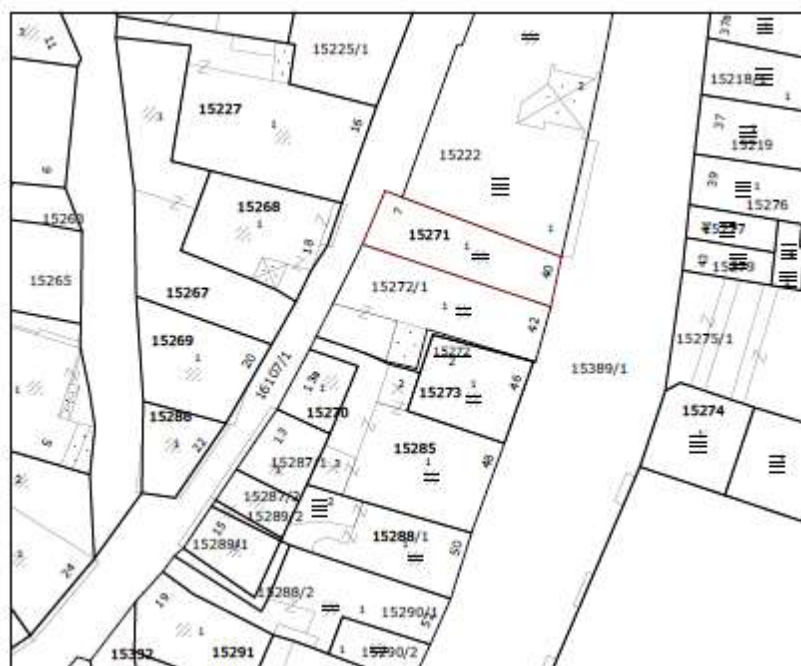
(Year 2000)



(Year 1974)



(Year 2020)



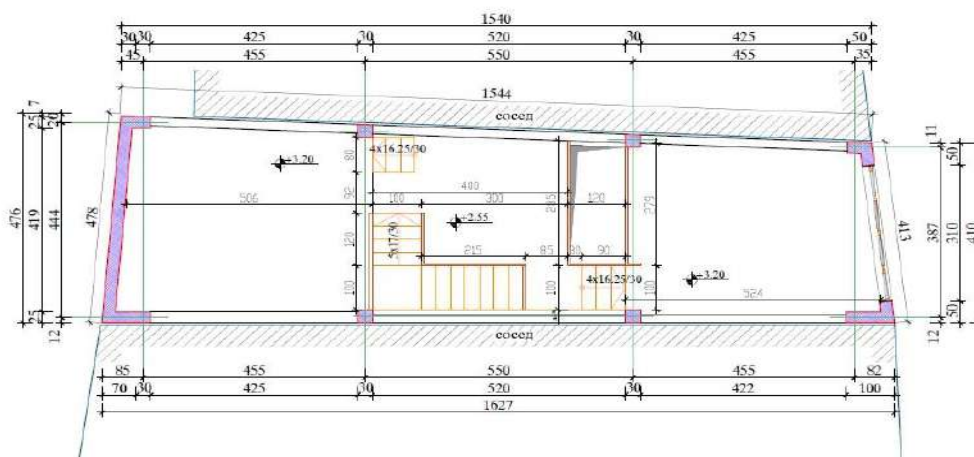
The project includes arranging the interior space of an existing building, on which the previously mentioned works have not been performed. This project does not include large-scale construction works and its realization does not require a building permit and/or other approvals related to construction activities in this central area of the city of Ohrid. For the realization of this project, our company rents the aforementioned space, which is privately owned. For the planned rental space, ie the building whose part of the space will be rented by our company, are provided all the necessary approvals, solutions and opinions from the relevant institutions which confirm the correctness of the constructed building, its stability and approvals for the implementation of our project. Namely, the building was built in accordance with the Building Permit No. 28 UP.-466/18 from 23.01.2019 issued by the Ministry of Transport and Communications, as well as the Decision for changes during construction No. 28 UP.466 / 18 -20 from 13.08.2020 also issued by the Ministry of Transport and Communications of R.N. Macedonia. Additionally, a positive Opinion was issued for the building on the projected degree of mechanical resistance, stability and seismic protection of the building, No. 0807-2169 / 5 dated 06.11.2017 by the Institute of Earthquake Engineering and Engineering Seismology - Skopje, as well as positive opinion regarding the changes for construction, issued by the same institution on 16.04.2020, no.0807-593 / 2. Finally, in addition to this document we attach the answer by the National Institution - Institute for the Protection of Cultural Monuments and Museum-Ohrid No. 03-73 / 2 from 20.01.2020, (Annex 1) where it is stated that this building is not an individual protected well and in accordance with the law, the interventions for its internal design, which is in fact the subject of this sub-project, do not represent a matter of direct preservation by this Institution and are not subject to a legal obligation to obtain conservation approval.

More detailed the main goal of the sub-project „Workshop of filigree – Vangel Dereban” is to re-create the workshop of Mr. Vangel Dereban and establish the Museum of filigree with his works. The project will support filling in gaps in the destination of Ohrid, Struga and the surrounding area in terms of activities and experiences that can be offered to tourists, such as:

- Acquaintance of tourists with traditional crafts;
- Offer of unique souvenirs; and
- Organization of courses for filigree craftsmanship.

The steps for implementation of the project are the following:

1. Civil works for interior arrangement of the workshop and the museum.



ОСНОВА НА ПРВ КАТ М = 1:75

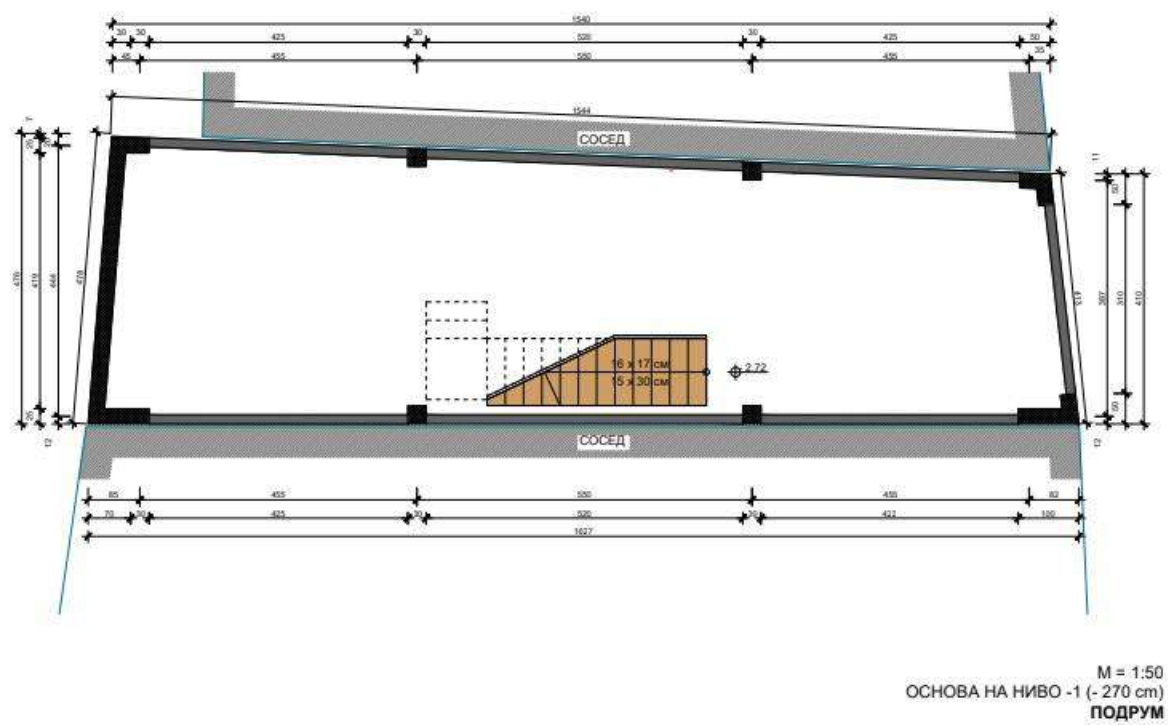
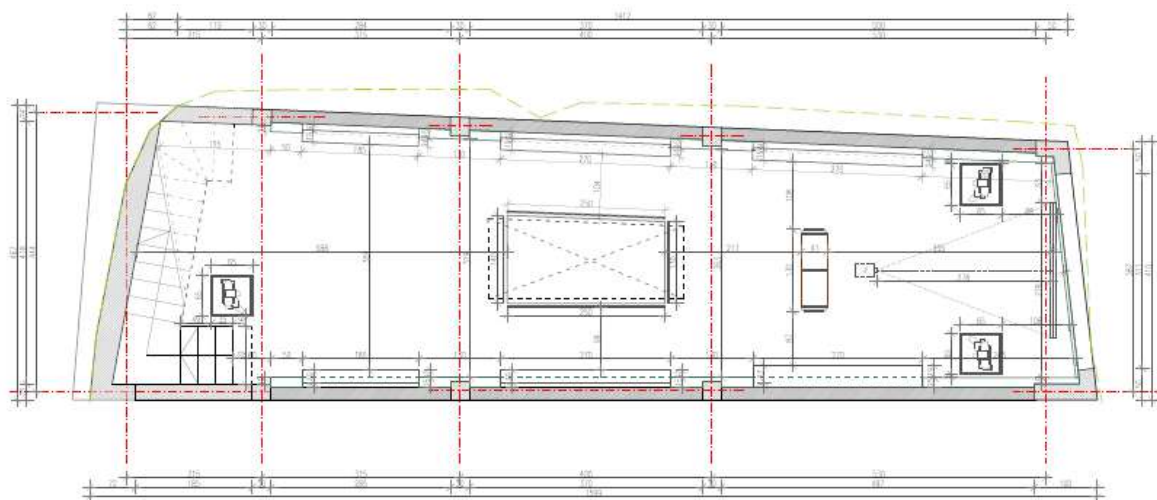


Figure 1. Current situation of basement, ground floor and first floor



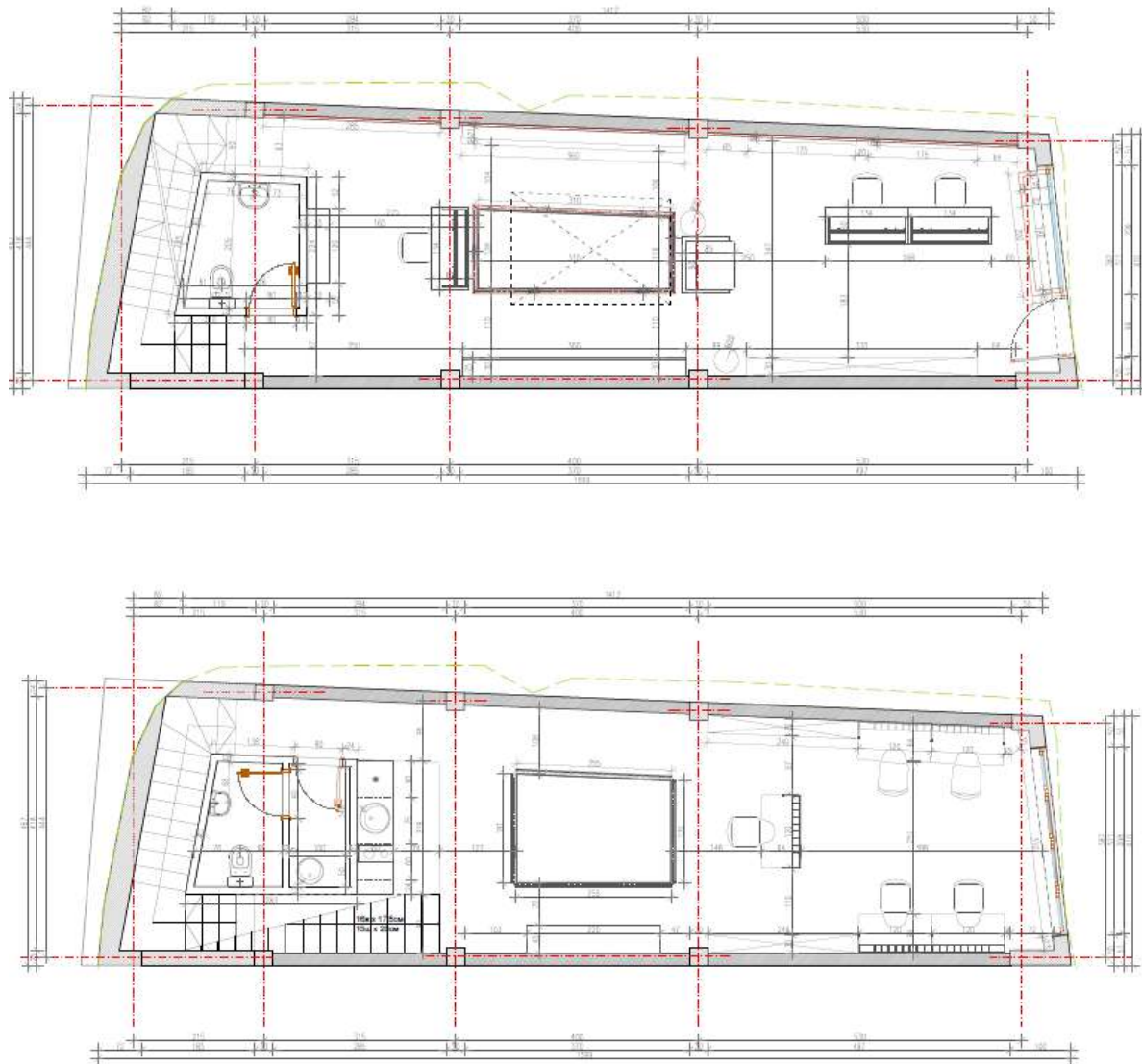


Figure 2. Situation of basement, ground floor and first floor according to new detail design (functional solution)

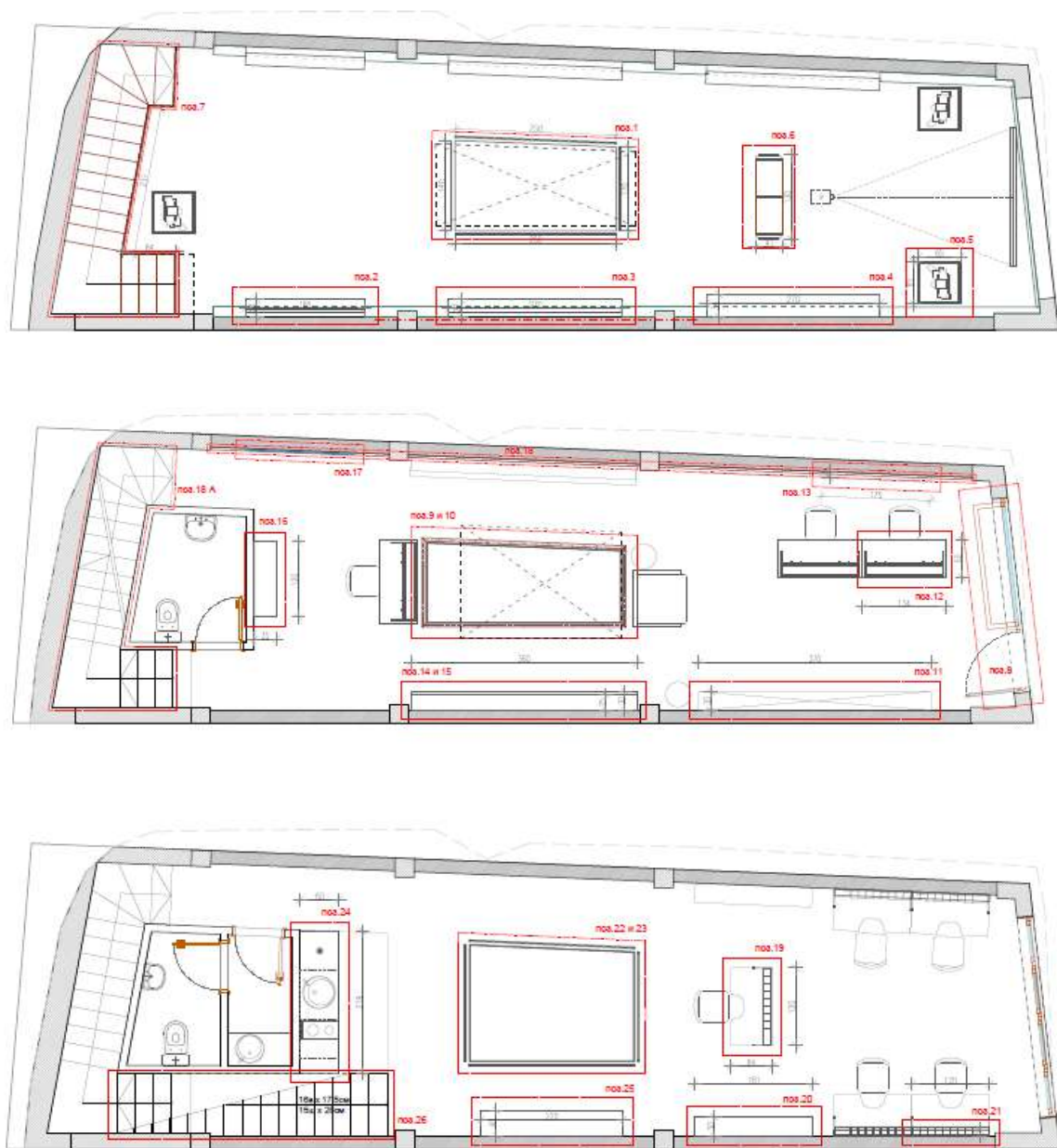


Figure 3. Situation of basement, ground floor and first floor with furniture according to new detail design (functional solution)

2. Installation of equipment.

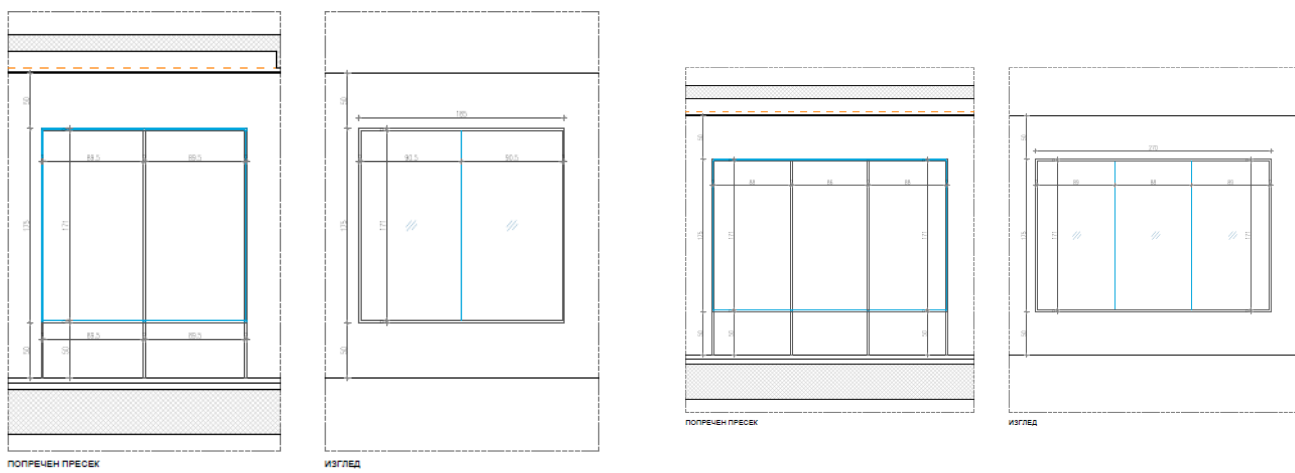


Figure 4. Island cabinet/cabinets

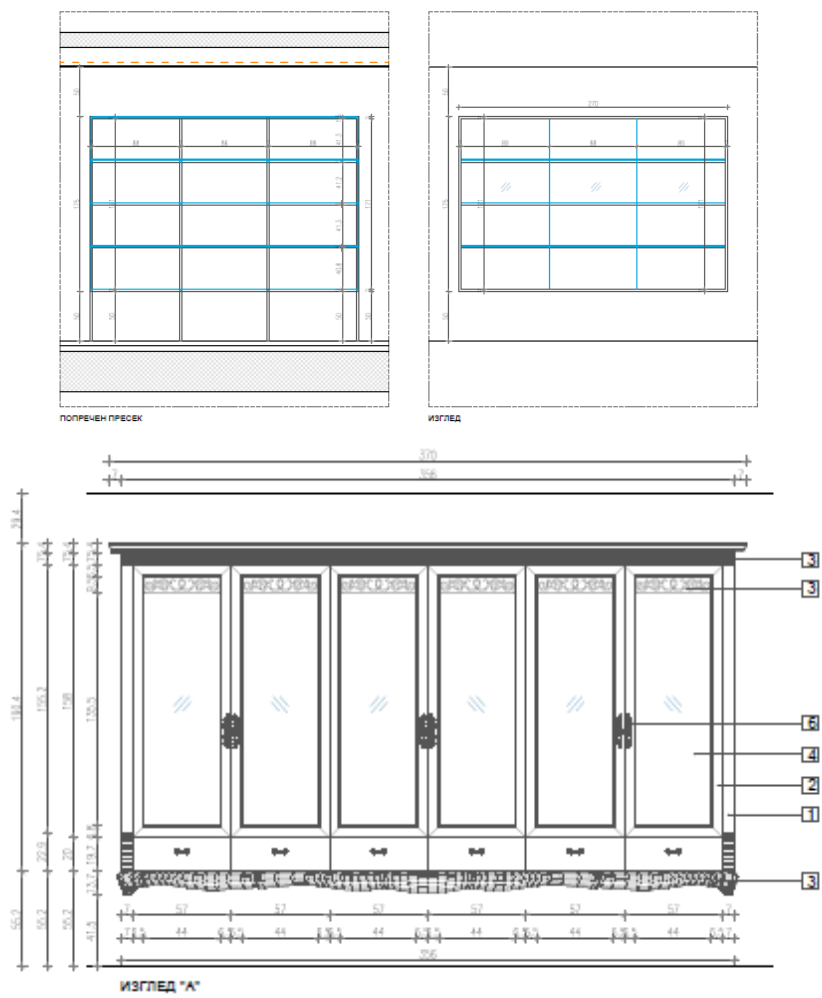


Figure 5. Cabinets with shelves

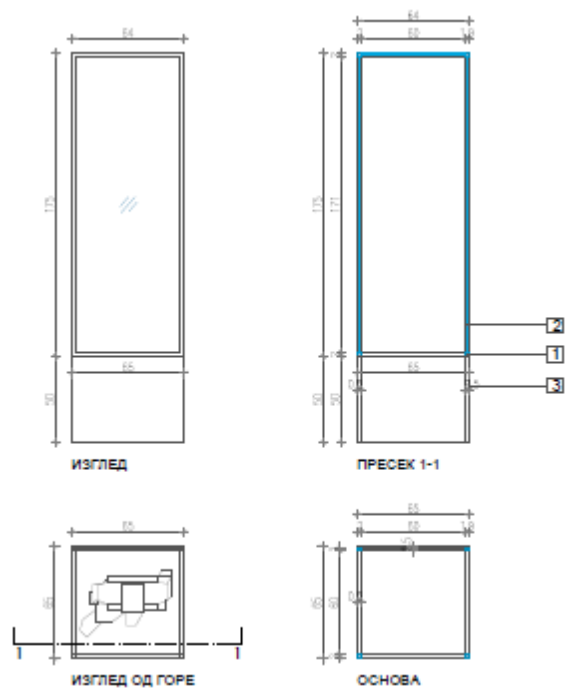


Figure 6. Cabinet for dolls

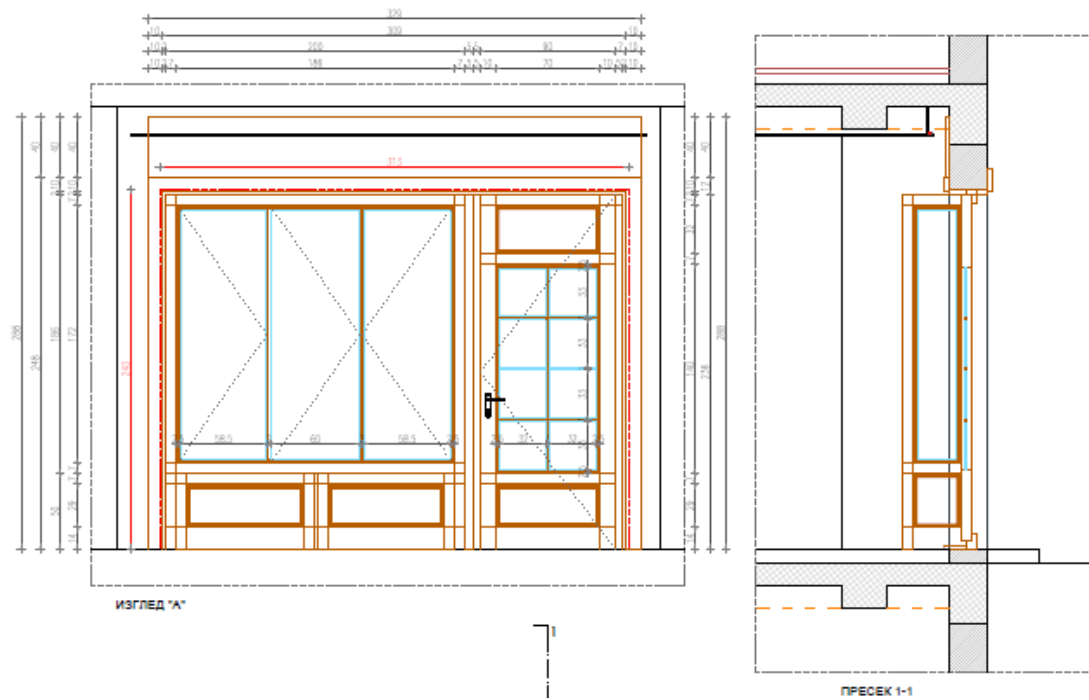
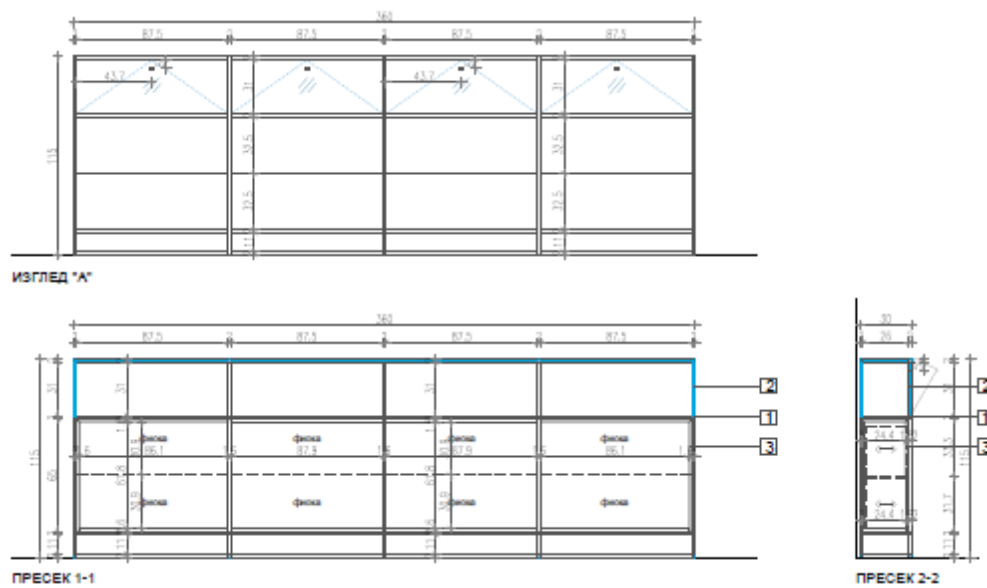


Figure 7. Entrance door with cabinet for shop window



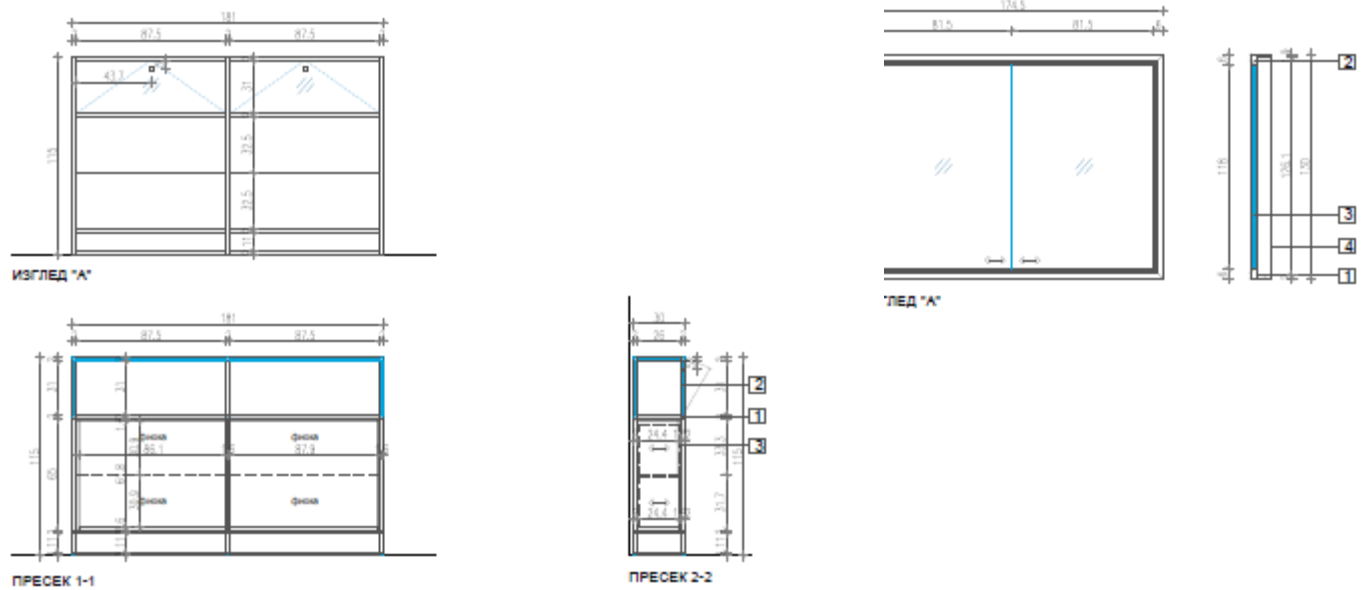


Figure 8. Cabinets with glass

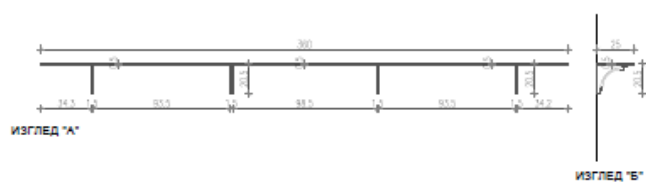


Figure 9. Shelf

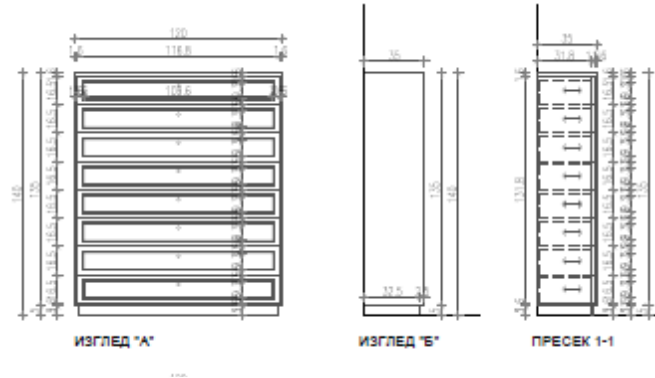


Figure 10. Cabinet with drawers

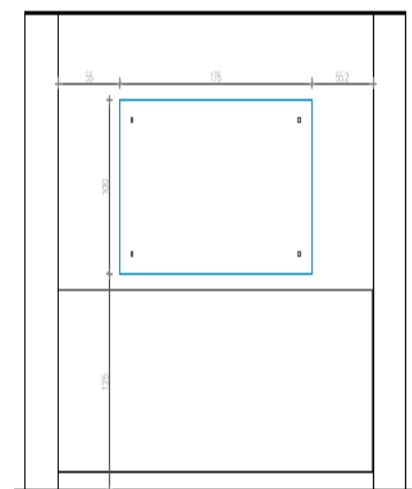


Figure 11. Information board made of glass

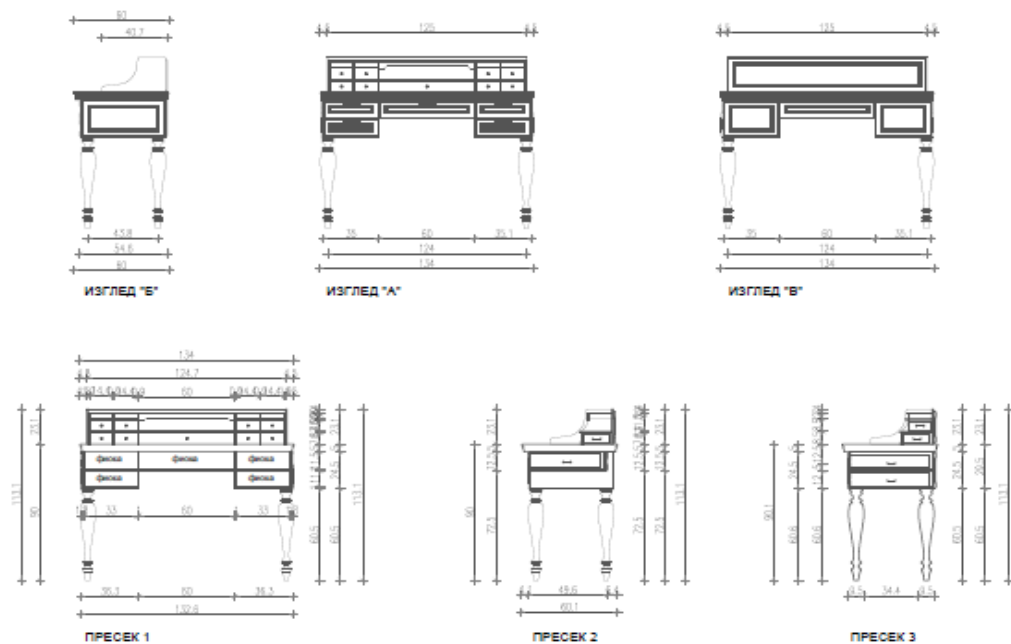


Figure 13. Desk

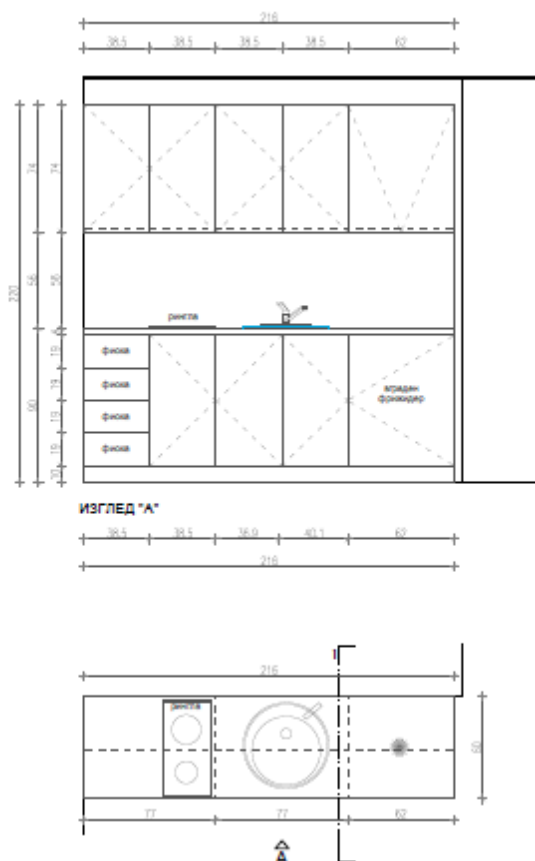


Figure 14. Kitchen

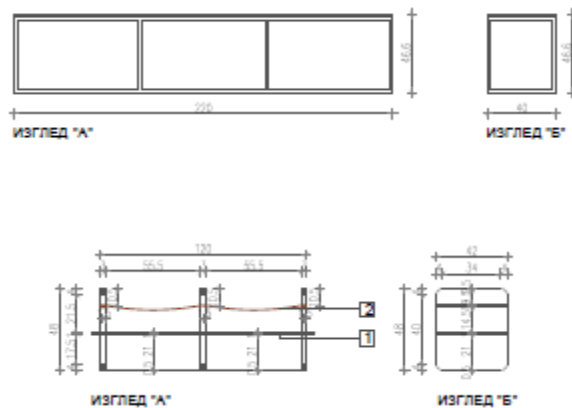


Figure 15. Bench

The planned civil works according to the Bill of Quantities are divided in several categories:

1. Concrete Works

- ✓ Procurement of material and construction of non-load-bearing concrete wall, with smooth panel cladding, with ideal geometric processing, with a thickness of 12 to 15 cm. (59,6m²)

2. Floor Lying Works

- ✓ Procurement of material and construction of concrete floor, from ferro concrete with metal scrapers and joints, for protection against cracking, with all necessary preparations, substrates and finishing and material and construction of metal L-winch moldings, black color or the basement (58,6m²)
- ✓ Procurement of material and construction of terrace floor, with all necessary substrates, preparations and final finishing and material and construction of solid wood moldings, dark walnut for ground floor (45,6m²) and
- ✓ Procurement of material and construction of matched floor, in workshop and kitchen, with all necessary preparations, substrates and final processing and material and construction of solid wood moldings for the floor (44,7m²).

3. Plaster Works

- ✓ Procurement of materials, transport and construction of a dropped ceiling from plasterboard plates d = 1.25 cm., placed on its own metal substructure, filled with insulation 5 cm and banding and smoothing of the joints, with prior preparation for installation of hidden lighting (135,3m²).

4. Wall Processing Works

- ✓ Procurement of material and construction of stone wall cladding, with plastered accent joints and material and construction of wall parapet lining of solid profiled wood, light oak (final processed, treated with oils and tinting agents). (94.2m²)

5. Ceramic Works

- ✓ Procurement, transport and installation of ceramic floor and wall tiles in a bathroom with pre-installed waterproofing. (46,4 m²)

6. Painting Works

- ✓ Purchase of material, transportation and plastering and glazing of walls and ceilings with poly-colour paint, with pre-placement of corner moldings on external broken edges. (135,3m²)

7. Electrical Installations

- ✓ Complete electrical cabling and connection including distribution boards.
- ✓ Complete illumination of all museum elements as well as general illumination of space.

8. Heating and Cooling

- ✓ Supply of material, transport and installation of complete floor heating system including complete fitting and insulation
- ✓ Procurement of material, transport and installation of heat pump run on electricity for heating and cooling on as well as complete connection to the underfloor heating system (MACRW040ZA/PS(E) cooling capacity 10.0 kW, heating capacity 11.0 kW)

9. Crafts Works (interior items)

- ✓ Supply, transportation and installation of a wooden door with glass parts that open from the inside, dark walnut.
- ✓ Supply, transportation and installation of a wooden door, dimensions 80x220cm.
- ✓ Making of display cabinet, made of metal profiles with a cross section of 2x2 cm, painted in black matte colour, with glazing on all sides.
- ✓ Making of a stand-alone cabinet for costume display, made of metal profiles with a cross section of 2x2 cm, painted in matt black, pedestal covered with steel sheet, painted in matt black, with glazing on all sides, glass on one side to open.
- ✓ Making of a bench, made of metal profiles, painted in matte black, based on natural leather.
- ✓ Making of a display cabinet for shelves and drawers, body, frame, doors and drawers made of solid light oak wood and dark walnut (final processed, treated with oils and tinting agents). With glazed doors and glass shelves, and a background of dark blue textiles. Lockable metal cladding. Mounted on a suitable substructure for wall hanging.
- ✓ Making of a shelf, made of sheet steel with $d = 0.5$ cm, painted with matte black colour, wall hanging.
- ✓ Making a chest of drawers, from wood, body and drawers with $d = 1.6$ cm, painted in matte black colour.
- ✓ Making a work desk, upper part of solid wood, light oak (finished, treated with oils and tinting agents), with drawers with opening profile, black part with drawers made of wood, and a leg of metal profiles 2x2cm, painted in matte black.
- ✓ Procurement of materials and construction of a bench, made of metal profiles with a cross section of 2x2 cm, painted with black matte paint, and a seating area made of wood, painted with matte black paint.
- ✓ Construction of kitchen, body, doors and drawers made of MDF, $d = 1.6$ cm, painted with matte black colour with soft closing.

10. Procurement and installation of sanitary items

- ✓ Supply and installation of 2 WC shells, 2 toilet items, 2 washbasins with fountain and full fitting and wooden accessories.

11. Procurement and installation of electrical appliances

- ✓ Supply and installation of LED TV, projector and canvas and personal computers, equipment for the kitchen (fridge, coffee machine, stove etc).

It is important to note that the building is not an individually preserved object and is not subject to a special preservation regime, which is confirmed by the statement issued by the National Institution for the Protection of Cultural Monuments and Museum - Ohrid. Additionally, in this same statement, the Institution confirms that the interventions for interior decoration in the same building is not subject to a legal obligation for obtaining approval for conservation. The statement issued by this Institution is included in the appendix of this Plan.

The purpose of the Cultural Heritage Management Plan is protection, preservation, elimination, and reduction of the negative effects on the cultural heritage in accordance with the Law on Protection of the Cultural Heritage of the Republic of Macedonia.

Benefits from the project

The project envisages small-scale construction activities, connected exclusively to the interior design of an existing space. These activities include improvement of interior walls and floors, procurement of furniture for exhibiting, department for sale of jewellery and a space for organizing training courses, lighting, etc. Additionally, the project plans a series of promotional activities, such as preparation of panel boards for presentation, preparation of promotional materials, printing of the master's book and translations of the same, as well as organizing a promotional event that will mark the successful finalization of the project and promotion of activities that derive from it.

Institutions responsible for implementing, managing and administering the Cultural Heritage Management Plan

The Ministry of Culture of the Republic of Macedonia and the Directorate for Protection of Cultural Heritage, as an institution within the Ministry of Culture, are responsible for the protection of the immovable and movable cultural heritage in Macedonia. The Directorate for Protection of Cultural Heritage and the National Institute for the Protection of Cultural Monuments and Museum - Ohrid cooperate in relation to the conservation and development of cultural heritage, such as competence to act legally and to perform functions related to conservation and access to cultural heritage.

The works envisaged in the project The Filigree Workshop - Vangel Dereban, will not cause changes in the cultural heritage in the protected area of the bazaar, depicted from the fact that they are in accordance with Article 7 of the Law on declaring the old city of Ohrid a cultural heritage of special importance and will be carried out in accordance with the Initial Construction Project, for which the owner of the building has provided Conservation Approval and a building permit according to law. **The interior decoration and design of the space, which is the sole subject of this project, is not subject to approval in accordance with the abovementioned laws and permits.**

Legal and Institutional Frameworks

Several sectoral policies for physical cultural resources can be activated for the project development. The main relevant laws are discussed below:

Law on Protection of Cultural Heritage

- Law on Protection of Cultural Heritage "Official Gazette of the Republic of Macedonia" no. 20/04 of 02.04.2004 • Law on Protection of Cultural Heritage consolidated text ("Official Gazette of the Republic of Macedonia" no. 20/04, 71/04, 115/07, 18/11, 148/11, 23/13, 137/13, 164/13, 38/14, 44/14, 199/14, 104/15, 154/15, 192/15 and 39/16)
- Law on Ratification of the Convention for the Protection of Non-Intellectual Cultural Heritage ("Official Gazette of the Republic of Macedonia" No. 59 of 12.05.2006)
- Amending the Law on Protection of Cultural Heritage ("Official Gazette of the Republic of Macedonia" No. 18 of 25.09.2011)
- Amending the Law on Protection of Cultural Heritage ("Official Gazette of the Republic of Macedonia" No. 18 of 14.02.2011)
- Amending the Law on Protection of Cultural Heritage ("Official Gazette of the Republic of Macedonia" no. 148/2011)
- Amending the Law on Protection of Cultural Heritage ("Official Gazette of the Republic of Macedonia" no. 23/2013)
- Amending the Law on Protection of Cultural Heritage ("Official Gazette of the Republic of Macedonia" No. 164 of 27.11.2013)
- Amending the Law on Protection of Cultural Heritage ("Official Gazette of the Republic of Macedonia" No. 38 of 24.02.2014)
- Amending the Law on Protection of Cultural Heritage ("Official Gazette of the Republic of Macedonia" no. 44/2014)
- Amending the Law on Protection of Cultural Heritage ("Official Gazette of the Republic of Macedonia" No. 199/14,
- Amending the Law on Protection of Cultural Heritage ("Official Gazette of the Republic of Macedonia" no. 154/15)
- Amending the Law on Protection of Cultural Heritage ("Official Gazette of the Republic of Macedonia" No. 39/16)

Article 2

According to the Law on Protection of Cultural Heritage of the Republic of Macedonia, cultural heritage is the total material and intangible assets with archaeological, ethnological, historical, artistic, urban, social and other scientific values, contents and functions and have cultural and historical importance and are protected by law. Cultural heritage is categorized as movable and immovable.

The Law on Protection of Cultural Heritage establishes a protocol for all stakeholders involved in the activities for conservation and management of cultural heritage. Also, the Law on Protection of Cultural Heritage provides for the preparation of a Plan for Cultural Heritage which should contain proposed measures and activities. for the protection of cultural heritage as well as potential factors and risks that pose a risk to cultural heritage.

Article 4

Paragraph 1 - The main purpose of the law is the protection of cultural heritage in its original condition.

Paragraph 2 of Article 4 states that the objects found during the construction works should be handed over to the relevant institutions.

Article 6

Article 6 of the Law on Cultural Heritage states that “if during the construction works archaeological finds are discovered, the contractor / investor is obliged to submit a report to the responsible institution within 3 days in accordance with Article 129 of the Law on Protection of Cultural Heritage. Also, the constructor is obliged to stop all construction works.

The Law on Proclamation of the Old Town of Ohrid for Cultural Heritage of Special Importance (Official Gazette of the Republic of Macedonia, No. 47 of 08.04.2011) and the Law on Amendments to the Law on Proclamation of the Old Town of Ohrid for Cultural Heritage heritage of special importance (Official Gazette of RM, no. 154 of 4.09.2015)

The proclamation of the monumental unit "Old Town of Ohrid", for cultural heritage of special importance, enables:

- permanent preservation of historical, artistic, architectural, urban, environmental, ethnological, spiritual, sociological and other scientific and cultural values, as well as authenticity, uniqueness, rarity, diversity, integrality, age and other properties, contents and functions
- creating favorable conditions for survival and maintaining the integrity of all data contained in it as evidence,
- disseminating knowledge about its values, meaning and role in cultural identification,
- training to serve the cultural, scientific, educational, aesthetic, economic, tourist and other needs of the citizens and
- prevention of actions, phenomena and influences that cause or may cause damage or degradation.

The monumental complex "Old Town of Ohrid" created in the period from IV century BC to XXI century, as a cultural heritage of special importance, is of good general interest to the Republic of Macedonia and enjoys special protection in accordance with this law, the Law on Protection of the cultural heritage and the Law on Management of the World Natural and Cultural Heritage of the Ohrid Region and other law.

OP 4.11 from the World Bank for Physical Cultural Resources

The purpose of this procedure is to support countries in avoiding or mitigating the negative effects on physical cultural values during the development of World Bank-funded projects. It also states that the effects on physical cultural resources arising from project activities, including mitigation measures, may not take into account either national legislation or the obligations of relevant international agreements. Paragraph 9 provides a guide for developing plans for the management of physical cultural resources

2. Purpose of this Plan

This Plan is part of the Environmental and Social Management Plan (ESMP).

3. Measures to avoid, mitigate and reduce the effects on cultural heritage

Due to the risk of possible negative effects on the authentic appearance of the buildings in the Bazaar, such as deviations from the Law on Protection of Cultural Heritage and the Law on Proclamation of the Old Town of Ohrid for Cultural Heritage, to avoid, mitigate and reduce effects on cultural heritage the following measures are proposed:

- Harmonization of the inscriptions with the legislation for the Bazaar in Ohrid
- Implementation of Environmental Plans, Social Aspects and Cultural Heritage

4. Capacity building / awareness raising and engagement

All non-professionals, e.g. project staff, contractor staff and involved in project implementation should be informed about physical cultural resources. The training aims to enable non-professionals to identify

hazards to physical cultural resources, prevent damage to cultural heritage, and register and report on any cultural heritage.

5. Specific roles and responsibilities

The roles and responsibilities of each team member in project implementation are described below

Contractor

Implementation of this Cultural Heritage Management Plan is the responsibility of the contractor. During the construction works, in case of FKR, the contractor is obliged to stop the construction activities and to inform the responsible institutions. Also, the contractor is obliged to act in accordance with the Law on Protection of Cultural Heritage.

User

Regarding the Supervising Expert for Cultural Heritage, the implementation of certain measures will be monitored by the user - ie. the sub-project coordinator. The implementation of the measures will be monitored before the beginning of the construction works, during the construction works and after the completion of the construction works.

6. Monitoring and Reporting

The cultural heritage management plan during project implementation provides information on key aspects of the cultural heritage protection project, in particular the project effect and effective mitigation measures. This information enables the recipient and the World Bank to evaluate the success of mitigation as part of monitoring and to take appropriate action. Because of this, the Cultural Heritage Management Plan identifies the objectives for monitoring and determines the type of monitoring in relation to the assessed effects in the Cultural Heritage Management Plan Report and the measures described therein. In particular, the monitoring section of the Cultural Heritage Management Plan provides a) a specific description and technical details of the tracking measures, including measurement parameters, methods to be used, measurement frequency, detection limits (where appropriate), and a boundary definition that will signal the need for repairs; and b) monitoring and reporting procedures for (s) ensuring early detection of conditions requiring special additional mitigation measures and (ii) providing information on the effectiveness, progress and results of mitigation measures.

In order to ensure a special impact on the performance of the contractor, an appropriate clause will be inserted in the contract of employment, which will accurately state the penalties in case of non-compliance with the agreed provisions for environmental protection, in the form of non-payment of a certain part of the payment, and the value will depend on the severity of the breach of contract. For extreme cases, the contract will also provide for a termination agreement.

The sub-project coordinator will prepare a report at the end of the implementation of the construction activities in which he will state the monitoring process and will report on the results in accordance with the Cultural Heritage Management Plan.

7. Announcement

The prepared Cultural Heritage Management Plan will be part of the bidding documentation and the contract with the contractor (along with the bill of quantities calculation) who will be obliged to implement the envisaged measures in accordance with the Mitigation Plan. Implementation of the Plan is mandatory for the contractor. The sub-project coordinator is responsible for monitoring and evaluating the implementation of the proposed measures within the Monitoring Plan and informing the Contractor and the

LRCP / Applicant Office. In accordance with the SEA, this PQN should be publicly consulted prior to the final approval of the sub-grant. Once approved by the ECA Expert and World Bank Specialist, the STM will be published on the ECJ website (KVZPEP). A printed form will be available in the ECJ.

The implementation of the Environmental and Social Management Plan and the EMSP will ensure timely implementation of the proposed measures and will contribute to the implementation of project activities without substantial effects on the environment or cultural heritage.

CULTURAL HERITAGE MANAGEMENT PLAN

<i>Activity</i>	<i>Expected effect</i>	<i>Suggested mitigation measures</i>	<i>Responsible entity</i>	<i>Period of implementation of the measures</i>	<i>Expenses related to the measures' implementation</i>
General conditions		Compatibility of appearance, color and other parameters for objects that are preserved with the existing authentic documentation	Contractor Coordinator		
Training		All non-professionals, e.g. project staff, contractor staff will receive appropriate training in physical cultural resources			
Placing an inscription on the object	Possible negative effects on the authentic appearance of the buildings in the Bazaar complex in the central core of Ohrid due to deviations from the regulations in accordance with the Law on declaring the old city core of Ohrid a cultural heritage of special importance	Harmonization of the inscriptions with the legislation for the Bazaar in Ohrid	Contractor Coordinator	During the implementation of the subproject	The costs are borne by the applicant



НАЦИОНАЛНА УСТАНОВА ЗАВОД ЗА ЗАШТИТА НА
СПОМЕНИЦИТЕ НА КУЛТУРАТА И МУЗЕЈ-ОХРИД

НУ Завод и Музеј - Охрид, ул. "Боро Шам" бр. 10, П.Факс. 95, 6000 Охрид, Република Македонија,
тел. 046/262-498, 046/231-300; факс 046/231-302, Музејска зграда Родееци 267-173.
Е-МАИЛ: zavodohrid@yahoo.com жиро сметки: Буџетска 180100907560319 и сопствена 18010090



До
Ивона Стојаноска
ДУТУ НОВА ЧВРГА увоз извоз
Охрид ДООЕЛ
Ул „Св Климент Охридски,, бр 40
6000 Охрид

Предмет:

ОДГОВОР

Поврзан со БАРАЊЕ бр 03-73/1 од 15.01.2020) за мислење за заштитниот статус на објектот и дали нашата институција дава одобрение за внатрешно уредување на објектот.

Според службената евиденција која ја поседува НУ Завод и Музеј Охрид, објектот кој се наоѓа на КП 15271 КО Охрид 3 (КП 15572 стар број, според катастарски премер 1970-'73), не претставува заштитено поединечно добро, и согласно одредбите од Законот за заштита на културното наследство (Сл. Весник на РМ., бр.20, 71/04, 115/07, 18/11, 148/11, 23/13, 137/13, 164/13, 38/14, 44/14, 199/14, 104/15, 154/15, 192/15, 39/16 и 11/18), интервенциите за внатрешно уредување во истиот не претставуваат непосредна заштита и не подлежат на законска обврска за добивање на конзерваторско одобрение.

Изработил:
Овластен конзерватор
Д.и.а. Горан Патчев

в.д. директор,
Даниела Недељковиќ

