

**CULTURAL HERITAGE MANAGEMENT PLAN
FOR THE PROJECT “REVITALIZATION OF KITINO KALE”**

MUNICIPALITY OF KICEVO

July 2018

Introduction

The Local and Regional Competitiveness Project (LRCP) is a four-year investment operation supported by the European Union through the Instrument for Pre-Accession Assistance (IPA II) and designed for competition and innovation in Macedonia. The project is implemented by the Cabinet of the Deputy Prime Minister for Economic Affairs, and is administered by the World Bank. The main objective of the Local and Regional Competitiveness Project is to strengthen the contribution of tourism to the local economic development and to enhance the capacities of the Government and public institutions in order to boost tourism's development and facilitate the management of the destinations. The LRCP will provide funding for capacity building that will contribute to the further development of the tourism sector, investment in destinations and support their progress. The project will support selected tourist destinations in the country through a combination of technical support in order to improve destination's management, investment in infrastructure and innovation.

The Environmental and Social Management Plan (ESMP), including the Cultural Heritage Management Plan (CHMP), refer to the envisaged activities within the project "Revitalization of Kitino Kale" in the Municipality of Kicevo. The Cultural Heritage Management Plan includes a description of the project, technical details and a description of the site and the location. Based on these parameters it assesses the risks associated to the immovable cultural heritage. The implementation of mitigating and monitoring measures that identify the determined risks and issues in the Cultural Heritage Management Plan is mandatory.

1. Information about the project and the benefits of its realization

Located on a dominant position in the center of the city, the Kitino Kale is a park complex with paths for recreation, promenades and accompanying facilities that in the past period enabled the quality fulfillment of leisure time and the organization of various parties and events. As a result of the long-standing carelessness of the site, the complex is now ruined, neglected and rarely visited. Recently, the municipality made efforts and provided funds for arranging the paths to the top of the hill, and installation of lighting within the complex. With the complete revitalization of Kitino Kale, this bad picture would change. With the reconstruction of the plateau in front of the building (patio arrangement and paving with granite anti-slip tiles for outdoor use), reconstruction of the fountain, arrangement of the access paths (restoration of the paths and replacement of damaged tiles), highlighting the cultural heritage and archaeological remains on the terrain (construction of a metal structure with a assumed look of the towers, at the present remains), horticultural arrangement (decorative stones and decorative bushed grass), introducing new activities (corner for children with built-in elements for playing, skates and swings, sitting benches and chess set for adults, trim path and fitness equipment for recreation, metal amphitheater construction and summer stage partly covered with tin roof) and by placing pergola (steel and wood construction, with a beech tree bench), the complex would be integrated into the urban tissue of the city.

Based on the current situation, there are many things that need to be replaced and renewed, but there are several new ideas for designing and implementing from scratch in order to reach the main result of this sub-project for the revival of Kitino Kale and its transformation into a functional and reconstructed complex for recreation and relaxation of visitors. For that purpose, the Municipality of Kicevo is planning activities for full revitalization of Kitino Kale, which would change the current bad situation on the site. The project includes the reconstruction of the plateau in front of the ruined existing object and reconstruction of the existing fountain. The plateau reconstruction includes paving with granite plates, installation of urban equipment and horticultural arrangement of promenades with bush grass, decorative

stone and seedlings. The arrangement of the access paths including rehabilitation of the substrate and the replacement of damaged tiles, as well as the highlighting of the cultural heritage and archaeological remains on the field, through the construction of a metal structure with a assumed tower look, will provide a pleasant visual experience of the complex.



Figure 1 and Figure 2 The current state of the plateau in front of the object



Figure 3 Remains of the medieval tower

Figure 4, Figure 5 Paths towards the facility for reconstruction and toward the Memorial-Ossuary on the top of the hill

Introducing the new activities which include building the corner for children and retirees, as well a fitness corner, setting a summer scene and an open amphitheater, and placing a pergola, will contribute to the revival of the complex. Urban equipment (benches, garbage bins) will be present in the complex, and children's corner includes installation of props for playing (slides, skittles, swings), as in continuation the chess set for older visitors will be installed. The built-in structure with a wooden bench will provide comfort, rest, relaxation and a nice view for the visitors.

One of the planned activities is the construction of a slab for the summer stage, partially covered with tin cover and installation of metal structure on which a wooden material/planks is placed, aimed for seating, in a form of small amphitheater. Its function is, in a first place the protection of the existing building, and creating conditions for organizing small scale outdoor events that can additionally contribute to a greater

attendance from the local population (citizens) and tourists. The summer open stage will be placed on the top of the plateau above the Memorial Monument of the National Liberation War (NLW).



Figure 6 Memorial ossuary

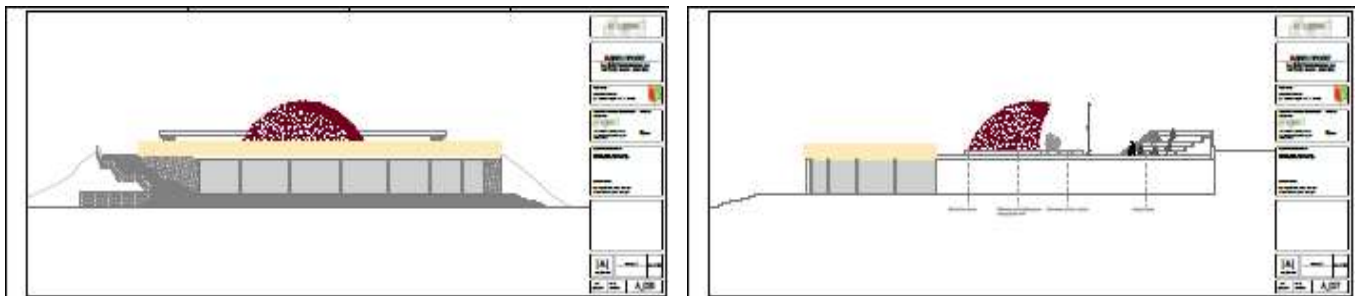


Figure 7 The Plateau of the Memorial-ossuary (view of the summer scene)

We point out that the new contents do not touch, change or damage the existing monument as an object – neither the monument nor its purpose. With the realization of this project, which implies re- slab the plateau, we protect the building itself from its decay and destruction. The municipality takes into account the current state of the building for which considers that revitalization is the most important procedure that needs to be done in order to protect the existing object and cultural heritage, as well as the tradition and values that are embedded in it. Memorial monument, the so-called Memorial ossuary was built in the fifties of the last century but with time, due to negligence a certain part of the centuries-old traditional has been ruined. In the frames of the entire complex Kitino Kale, an abandonment is present in some of the towers of the castle as a fortress.

The current situation is next; the existing Memorial Monument is closed and opens only for the patronage of the city on September 11th. On this day, fresh flowers are given by representatives of institutions, political parties, associations of citizens from the city and citizens, who with this act give recognition to the victim of the fallen fighters during the Second World War.



Figure 8 Memorial Monument

Figure 9 Celebration of September 11

The relics of the fallen fighters are transferred and stored in a coffin in a small room, 5 m², located at the far eastern part of the Memorial and protected by an iron door.

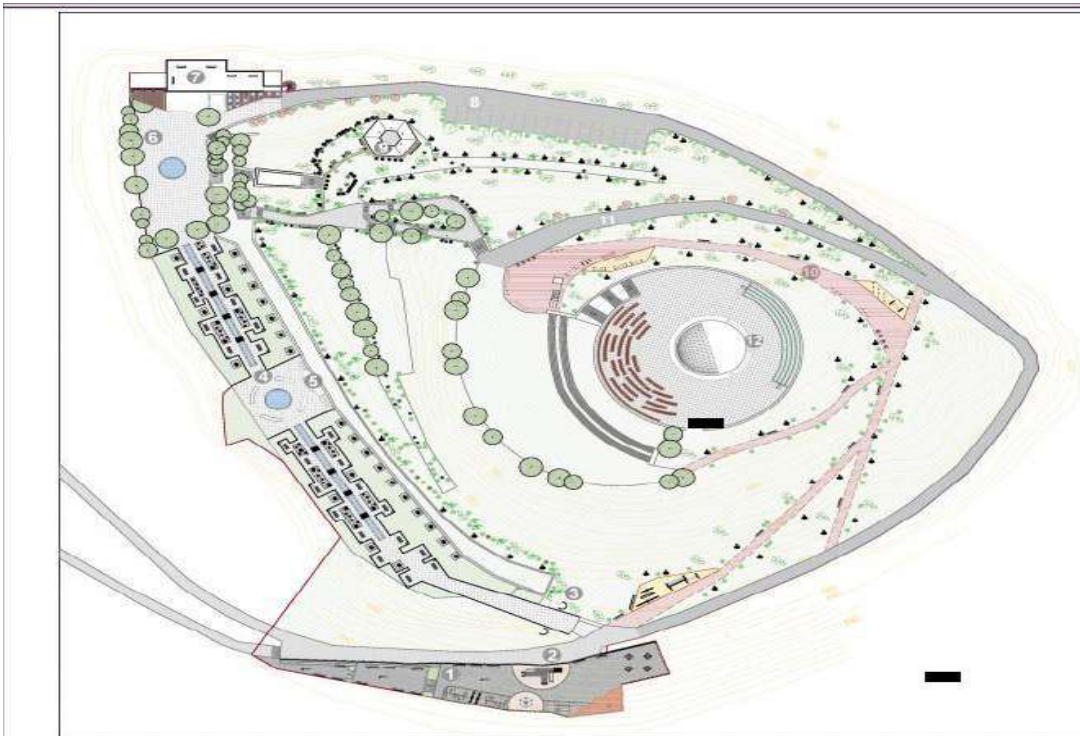


Figure 10 Marked place where the relics of the fallen fighters are kept



Figure11/12Door from the room where the relics are kept

Twelve years ago, the Municipality of Kichevo in cooperation with the NU-Skopje Conservation Center repaired the plaques on which the names of the fallen fighters were engraved and partially protected the plateau over them. A drainage channel was constructed (placed) for atmospheric waters in order to reduce and prevent further damage. However, due to inefficiency and lack of control over maintenance in Kitino Kale, the problem was repeated, thus there is a danger of re-ruining the mentioned slabs. Namely, the grids are stolen, and the channel is clogged, which again creates a problem that affects damage to the building, such as slabs with engraved names of fallen fighters and the ceiling of the building.



Figure13 Drainage channel for atmospheric watersFigure 14Damaged ceiling

With the foreseen project activity, the entire protection of the object and the elimination of the conditions that create the problem of damage to the object are performed. By re-slab of the entire surface of the plateau at the top (not just the part above the memorial monument), drainage is done and further decay and ruining is avoided. With the performance of a summer open stage, the layout and the purpose of the Memorial monument are not disturbed, but the arrangement of the space is created, which creates the conditions for complete protection, for greater historical visibility for its significance, as well as for the revival of the space by holding small scale manifestations (a possibility of teaching classes in nature, marking patronage of schools, literary reading, folklore events, painting / drawing, choral singing, etc.). The characteristics of this place, such as the total area, vegetation and its historical significance and value, indicate that it can't be meant for and there are no foreseen events that involve the presence of a large audience.

The planned activities for revitalization of the complex Kitino Kale include:

- Construction activities for adaptation/reconstruction of an existing building (former restaurant) and an existing fountain, which includes preparatory work, earthworks, insulation, masonry works, metalworking, concrete works, installation, painting and facade works.

- Rehabilitation of the existing utility infrastructure in the complex Kitino Kale - reconstruction of the restaurant water supply network, fecal sewer, electricity.

- Construction of assembly (public) facilities in the complex (children's corner, pensioners corner, trim path and corner for fitness, sightseeing installation, summer stage), which include preparatory works, construction works for paving, installation of concrete foundations, as well as procurement and installation of equipment (urban equipment, children's playground equipment, fitness equipment).

- Reconstruction of plateau, horticultural arrangement and installation of urban equipment, which includes construction works for landscaping - replacement of damaged concrete tiles, compaction and placement of new granite anti-slip tiles, installation of decorative grass and decorative crushed stones, installation of concrete foundations and installation of urban equipment.

- Reconstruction of pedestrian and access traffic paths within the existing dimensions, which involves replacement of damaged concrete tiles with new ones upon the pedestrian path and construction works for excavation of dilapidated asphalt, compaction and installation of a new bituminous layer (2 existing access roads/paths with length of 257m and 173m and width of 2,5m).

Kitino Kale represents a great tourist potential, on any basis defined as an existing attraction that has been fully used in the past. Due to the current ruined state, at the moment this location can only be perceived as area with potential. If it undergoes a certain intervention and is put into operation, according to the project envision Kitino Kale will become an attractive destination, a recognizable tourist attraction, in which enjoyment will find a wide variety of domestic and foreign visitors. The location in the city center provides communication, i.e. pedestrian accessibility, and from the top of the hill provides a beautiful view of the city and its surroundings. There are a number of catering and shopping facilities in the city that provide various services for eating, entertainment, overnight, etc.

The reorganization of the space and the utilization of the connection inside-out and the reconstruction of the ruined object with conversion into a multimedia center will provide diverse offer, such as cafe-bar, cinema projections, concerts, cultural events, seminars, workshops, etc. The new look and newly introduced activities, as well as the proximity of the complex to the city center, will enable this

location to be a recognizable brand and a part of day-to-day life, which will affect the quality of life and the economic benefit of the municipality.

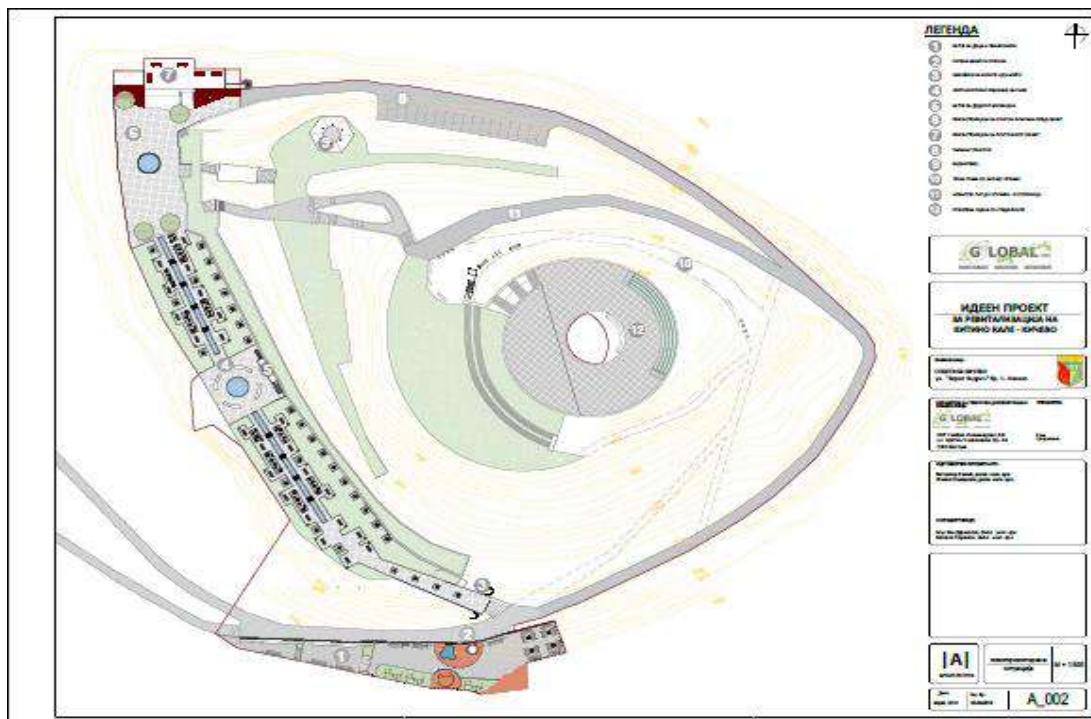


Figure 8 Planned look of the complex Kitino Kale after a project intervention

2. Responsible institutions for the implementation, management and administration of the Cultural Heritage Management Plan

The Ministry of Culture of the Republic of Macedonia and the Directorate for Protection of Cultural Heritage, as an institution within the Ministry of Culture, are responsible for the protection of the immovable and movable cultural heritage in Macedonia. The Directorate for Protection of Cultural Heritage and the National Institution Conservation Center – Skopje, have cooperation in terms of conservation and development of cultural heritage, while some of their competences include the legal procedures and performing activities related to conservation and access to cultural heritage.

The Municipality of Kicevo has designed a detailed urban plan for the central city area, "the locality Old Bazaar Block 14 Kicevo", and Kitino Kale belongs in this area. It was adopted by the Council of the Municipality of Kicevo with decision No. 07-3902/12 of 30.11.2006. The urban plan was prepared on the basis of the envisaged protection regime in the Decision for determining the status of the monument of culture of Kitino Kale, issued by the Republic Institute for the Protection of Cultural Monuments on 25.04.1990 with No. 08-561.

The Municipality of Kicevo will be responsible for implementation of the project "Revitalization of Kitino Kale" in cooperation with the Conservation Center - Skopje and the Directorate for Protection of Cultural Heritage in Macedonia. The proposed activities in the project "Revitalization of Kitino Kale" does not envisage any changes in the cultural heritage in the protected area, because of the fact that they are in accordance with the Decision for determining the setting of a cultural monument, which envisages a special regime for protection. According to the Decision, the archaeological site Kitino Kale receives the status of a monument of culture and protected area, and it is forbidden without prior approval to

expand the existing facility and expand and reconstruct the paths, as well as other actions that would endanger the integrity of this monument of culture.

According to the Law on Protection of Cultural Heritage, preliminary preparation of protective conservation conditions is necessary, as a basis for the development of technical documentation. The conservation conditions contain a textual, graphic and documentary presentation of the protected areas and provide relevant information on the planning and regulation of the protected cultural area. In accordance with the Decision for determining the status of a cultural monument, prior to any undertaking of a particular activity on the site, primarily construction activities, the Municipality of Kichevo provided conservation opinion and conditions by the National Institution Conservation Center - Skopje. The National Institution Conservation Center - Skopje prepared the conservation conditions and opinion at the request of the Municipality of Kichevo, which as competent in this case, for the issuance of necessary approvals, in the preparation of the Basic Projects, incorporates the conservation conditions issued by the NU-Conservation Center Skopje. According to the Decision for protection and conservation conditions for preparation of project documentation Up No. 08-356 dated 23.07.2018. issued by the Directorate for Cultural Heritage Protection, as well as the additional conservation opinion for protective conservation conditions up.no. 08-161 / 9 from 12.11.2018 and the conditions, the Municipality of Kichevo issued an Approval for placement of urban equipment no.10- 644/2018 of 26.11.2018. and Approval for building reconstruction UP.br.10-625 / 2018 of 23.11.2018.

Legal and Institutional Framework

Several national legal acts for physical cultural resources can be activated within the development of the project "Revitalization of Kitino Kale". The list of regulations and relevant documents for the proposed cultural heritage management measures include:

- Law on Protection of Cultural Heritage

- Law on Protection of Cultural Heritage "Official Gazette of the Republic of Macedonia" No. 20/04 of 02.04.2004
- Law on Conservation of Cultural Heritage consolidated text ("Official Gazette of the Republic of Macedonia" No.20/04, 71/04, 115/07, 18/11, 148/11, 23/13, 137/13, 164/13 , 38/14, 44/14, 199/14, 104/15, 154/15, 192/15 and 39/16)
- Law on Ratification of the Convention on the Protection of Intellectual Cultural Heritage ("Official Gazette of the Republic of Macedonia" No.59 of 12.05.2006)
- Amendments to the Law on Protection of Cultural Heritage ("Official Gazette of the Republic of Macedonia" No.18 of 25.09.2011
- Amendments to the Law on Protection of Cultural Heritage ("Official Gazette of the Republic of Macedonia" No. 18 of 14.02.2011
- Amendments to the Law on Protection of Cultural Heritage ("Official Gazette of the Republic of Macedonia" No. 148/2011
- Amendments to the Law on Protection of Cultural Heritage (Official Gazette of the Republic of Macedonia no. 23/2013
- Amendments to the Law on Protection of Cultural Heritage ("Official Gazette of the Republic of Macedonia" No. 164 of 27.11.2013

- Amendments to the Law on Protection of Cultural Heritage ("Official Gazette of the Republic of Macedonia" no.38 dated 24.02.2014
- Amendments to the Law on Protection of Cultural Heritage ("Official Gazette of the Republic of Macedonia" no.44/2014
- Amendments to the Law on Protection of Cultural Heritage ("Official Gazette of the Republic of Macedonia" No. 199/14,
- Amendments to the Law on Protection of Cultural Heritage ("Official Gazette of the Republic of Macedonia", no.154/15
- Amendments to the Law on Protection of Cultural Heritage ("Official Gazette of the Republic of Macedonia" No. 39/16

Article 2

According to the Article 2 of the Law on Protection of Cultural Heritage of the Republic of Macedonia, the cultural heritage is a collection of tangible and intangible goods with archeological, ethnological, historical, artistic, urban, sociological and other scientific and cultural values, properties, contents or functions, that have a cultural and historical significance, for the purpose of their protection as well as usage, they are under legal regime in accordance with this and other relevant laws. The cultural heritage is categorized as movable and immovable and immaterial.

The Law on Protection of Cultural Heritage establishes a protocol for all stakeholders involved in conservation and management of cultural heritage. The Law on Cultural Heritage Protection also envisions the preparation of a Cultural Heritage Management Plan, which should identify the potential factors and impacts that pose a risk to a cultural heritage and anticipates measures and activities for protection.

Article 4

Paragraph 1 - The primary objective of protection is to preserve the cultural heritage in its original state.

Paragraph 2 of Article 4 states that the operational purpose of protection is to undertake activities for the prevention of acts and influences that may cause damage, destruction, dissemination, degradation and illegal appropriation of cultural heritage.

Article 65

Article 65 of the Law on Cultural Heritage states:

(1) If during the execution of construction, agricultural or other works an archeological site or objects of archaeological significance arise, the contractor shall:

1. Report the discovery within the meaning of Article 129 paragraph (2) of this Law;
2. To stop the work and to secure the site from possible damage and destruction, and from unauthorized access
3. To preserve the discovered objects on the site and in the condition in which they are found.

(2) Notwithstanding paragraph (1) of this Article, if the objects have been excavated, i.e. taken out for the sake of their better protection or due to the circumstances, the contractor shall:

1. Hand over the detected objects upon their registration or to do so during the identification in the sense of Article 66 of this Law, and to take the measures necessary to ensure that they do not fail and are not

damaged or alienated; 2. Give all relevant information regarding the location and the position of the objects at the time of the disclosure and the circumstances under which it was done.

- Decision for determining the setting of a cultural monument, issued by the Republic Institute for the Protection of Cultural Monuments under No. 08-561 of 25.04.1990.

By determining the status of a cultural monument on the archaeological site Kale - a smaller fortified castle (oppidum), the following protection regime is provided:

- it is forbidden to expand an existing facility (which was previously a restaurant) without prior approval from the competent institution for protection of cultural heritage
- it is forbidden to extend the existing roads, as well as their reconstruction without prior approval from the competent institution for protection of cultural heritage
- prohibit actions that would endanger the integrity of the cultural monument

There will be no extension or widening of the road and no expansion of any existing facilities under this project.

OP 4.11 from the World Bank for Physical Cultural Resources

The policy for physical cultural resources is activated in a situation where subprojects within sub-component 3 – infrastructure, include projects that have direct or indirect impacts on immovable cultural resources. The purpose of this procedure is to support the institutions in the area of eliminating and mitigating the negative effects on physical cultural values during the development of projects financed by the World Bank. Potential impacts on physical cultural resources that may arise from project activities are activating this World Bank policy, according to which a Plan for management of cultural heritage matters should be prepared as part of in-depth analysis procedures.

3. Aim of the plan

The plan for managing the affairs of the cultural heritage is part of the Environmental and Social Management Plan (ESMP). Considering the importance of physical cultural resources as sources of scientific and historical information, as an integral part of the cultural identity and practices of people and as means for socio-economic development, the approach to their management is very important. CHMP has an important role to indicate the way in which physical and cultural heritage will be managed, including the monitoring of the given conservation conditions during the development of the project, especially during the design phase, in the construction phase and in the operational phase of the complex.

4. Cultural heritage on the locality Kitino Kale

The place Kitino Kale was named after the duchess Kita, the sister of King Marko, who lived in a palace on the hill. Kicevo was called at that time Kitin grad (Kita town). The fortress covers an area of 1.5 hectares, and consists of 440-meter-long rampart and five towers. In the vicinity of the fortifications there was a clock tower, which was destroyed in a fire.

Data on the existence of Kicevo (as Kicavis), can be obtained from the Charter of the Byzantine Emperor Vasilij II which dates from 1018. At that time the city was fortified and represented a significant military-administrative and commercial center of Samuel's kingdom. It is thought that in the Early Byzantine time, it was probably a castle on the elevation, which controlled the crossroads of the roadway that led from Skupi (Skopje) to Lychnid (Ohrid) and Prilep. In the period from 1282-1295, during the

Wars between Byzantium and Serbia, the Serbian king Milutin conquered Kicevo, which is why the Byzantine authorities left the town. The town was under Serbian rule until 1385, when the Ottomans occupied it. Kitino Kale then serves as the seat of the Turkish authorities. Later, around 1850, the fortress lost its role and was abandoned.

The archaeological site Kitino Kale is an elevated hill about 20 meters from the central city area, with an approximate circular base that narrows conically to the top of the hill on which is a flattened plateau. On the eastern, northern and southern sides of the hill are visible remains of a rampart and towers of medieval fortification, which can be noticed, but do not dominate the environment. On the west side of the hill, during the period 1955-1959, the terrain was forested and rearranged in a park, on the top was the Memorial-Ossuary of the fighters from the National Liberation War, and at the foot of the hill there is a Museum of Western Macedonia in the National Liberation War.

During the past construction works, the remains of foundations of habitat and remains of a rampart were discovered, indicating that there a settlement took place. A larger depot of medieval silver coins from Tsar Dushan, King Volkashin and his successors, was also discovered. Part of the depot is broken down, and the other part is kept at the National Museum in Belgrade. On the site were discovered fragments of ceramics with a larger and smaller dimension, dating from the Middle Ages. Considering the discovered archaeological material, there are indications that the locality existed in the prehistoric period, as well as in the period of the Byzantine empire. Archaeological structures, ceramics and coins points to the life of this site from the Eneolithic to the late Middle Ages.

It is assumed that the fortress (with the city around) had three ramparts and several square towers. The outer rampart (which is not yet discovered) surrounded the city, and the other two ramparts (which remains were discovered) served for defense. The last level was on the plateau at the top of the hill, where the palace was located. Remains of the gate at the last level can be seen today on the stairs in front of the park, where one of the towers still stands. During the construction of the Memorial-Ossuary, a large part of the remains was destroyed, while the rest is preserved underground. In the part of the town located at the foot of the fortress is one of the oldest settlements in Kicevo, which is called Podvaros (literal translation - Under town), a name that indicates the existence of a town (varos = town) located on the hill.

Figure 9 Assumed look of the fortress



The remains which are the oldest

Immediately along the western foothill of Kitino Kale, the ancient road from Skopje to Ohrid in the south and to Prilep to the east (the ancient road Skupi - Lihnid) was passing through. Probably in Roman times, was built a paved path on the hill, in order to control the road. The fortress existed in the end of antiquity (coins were found, buried in the middle of the 3rd century, as well as a single pieces from the 4th and 6th century (at Archaeological Museum Skopje).

Remains dating from Medieval time

The town of Kicava was built on the old remains on an area of about 150 x 100 m. In the Turkish period, alongside the fortress, there was a large civilian settlement, which grew into today's town. On the territory of the old fortress, today is the city park. In 1929, 302 silver coins from 14th century were found (Serbian and Venetian, today in the National Museum, Belgrade).

Systematic archaeological investigations of a larger extent of this site have not been carried out until today. In 2015, excavations were carried out in two locations in order to determine the boundaries of the archaeological site and its contact zones, to discover archaeological structures and to obtain data on the character of the site and the findings. According to the conclusions of these surveys, the remains of ancient and medieval walls, combined with archaeological findings, reveal elements of a central archaeological site that soon will be one of the pillars in the development of the local community.

5. Measures for avoidance, mitigation and reduction of impacts on cultural heritage

Due to the risk of possible negative impacts on the archaeological cultural heritage of the site of Kitino Kale, in case of a deviation from the protection regime provided with the Decision for determining the status of Kitino Kale as a monument of culture, if the implementation of inadequate and illicit project activities occurs, it is necessary to foresee measures to eliminate, mitigate or reduce impacts on cultural heritage. In accordance with the special conditions issued by the Conservation Center - Skopje, the measures for protection of the cultural heritage include:

- Preservation of the authentic appearance of the existing facility located in the complex Kitino Kale, in order to ensure its adequate protection, as well as its putting into operation
- Reconstruction and reuse of an existing fountain, located on the plateau in front of the building
- Removal of construction material and debris from the plateau in front of the building and installation of new cover (appropriate paving), in order to arrange the plateau
- Replacement of dilapidated asphalt leading to the plateau in front of the Memorial-Ossuary, where care should be taken not to deepen the excavation of the ground from the already existing substrate
- Horticultural and parterial arrangement of the park and installation of urban equipment, with no deeper soil excavation from the already existing substrate
- Preparation of installation buildings (children's corner, quality for pensioners, view and summer stage) to be taken into account, if excavation on the ground does not go deeper than 0,20 m or use the already existing substrate

- No new excavations or earthworks will be performed on new surfaces, without prior consultation or approval from a competent institution for the protection of cultural heritage. No new excavation or earthworks will be done under this sub-project.

- Implementation of the Environmental and Social Management Plan and of the Cultural Heritage Management Plan
- Capacity building, awareness-raising and engagement of properly trained workers –all of the engaged personnel in the execution of the project activities, the employees of the contractor and other involved persons in the implementation of the project, should be informed about the type of project intervention and the existence of a physical cultural resources on the project location. It is necessary to conduct appropriate training for acting in such circumstances, which aims to enable non-professionals to identify the dangers and potential adverse effects on physical cultural resources, prevent damage to cultural heritage, to register it and to report on any found residue of cultural heritage.

6. Specific roles and responsibilities

The roles and responsibilities of the members of the project implementation team are described in the text that follows.

Municipality of Kicevo

The implementation of the measures will be monitored by the beneficiary - the Municipality of Kicevo, i.e. the project coordinator, the communal inspector, the environmental inspector and the local development department that are part of the project team. The implementation of the measures will be monitored prior to the start of the construction works, during the execution of construction works, and after their completion. The presence of the monitoring team on the site of construction, in accordance with the envisaged dynamics, will ensure timely response and determination of measures in case of finding undisclosed physical cultural resources. The measures to be taken in that case include:

- Informing competent authorities and follow their instructions in line with the national legislation. Consultations with the Conservation Center - Skopje and the Ministry of Culture (Directorate for Protection of Cultural Heritage)
- Performing further excavation within a safe distance from the location of the finding in line with the instructions of the competent authorities;
- The team for project coordination and monitoring should ensure that the conduct of the contractor as well as the other involved personnel does not have a destructive effect on the cultural resources.

Contractor

The implementation of this Cultural Heritage Management Plan will be an integral part of the contractor's obligations. During the construction works, in case of finding physical cultural resources, the contractor is obliged to stop the construction activities and to inform the responsible institutions. Also, the contractor is obliged to act in accordance with the Law on Protection of Cultural Heritage.

7. Monitoring and reporting

The Cultural Heritage Management Plan provides information on the key aspects of the project for the protection of cultural heritage, the impacts of the project and the effectiveness of mitigation measures in particular. This information enables the recipient and the World Bank to evaluate the success of the mitigation as part of the monitoring and enable proper action in emerging situations. For this reason, the Cultural Heritage Management Plan identifies the monitoring objectives and determines the type of monitoring. In particular, the monitoring part of the Cultural Heritage Management Plan provides:

- a) specific description and technical details of the measures for monitoring, including the measurement parameters, the methods to be used, the frequency of the measurement, the detection limits (where appropriate) and the definition on the border signaling the need for intervention;

b) procedures for monitoring and reporting in order to ensure the early detection of conditions for which additional special mitigating measures should be taken, and providing the information on the effectiveness, progress and results of the implemented mitigating measures.

The Project Coordinator, an employee of the Municipality of Kicevo, will submit a short initial report two weeks after the start of the construction works. The Coordinator will report on the engagement of the team, the conditions on the site and anything that can have an effect or can change the implementation of the mitigating and monitoring measures.

At the end of each month, the Municipality of Kicevo will submit to the Project implementation Unit (PIU) a brief report on the progress of the works, concentrating on each problem when implementing the measures from CHMP. Submitting a report to the PIU on the implementation of the CHMP and the ESMP, will be performed every three months. In the case of non-implementation of the measures, the Municipality of Kicevo will immediately inform the PIU. The approved report by the Municipality of Kicevo and LRCP, upon completion of the phase, will be a condition for payment of the agreed fees. In order to ensure the mandatory implementation of the ESMP and CHMP by the contractor, a proper clause will be included in the employment contract, which will precisely state the penalties in case of non-compliance with the agreed provisions on environmental protection and cultural heritage, in the form of non-payment of a certain part of the envisaged means of payment. The value of the unpaid funds will depend on the severity of the breach of the contract. In case of extreme cases, the contract will also foresee termination of the agreement.

8. Public consultations

The Cultural Heritage Management Plan (CHMP) will be part of the bidding documentation and the contract with the contractor (with the bill of quantities) and the contractor will be obliged to implement the measures in accordance with the Plan for mitigation. The implementation of CHMP is mandatory for the contractor.

In accordance with the Environmental management framework, this CHMP should be publicly consulted prior to final approval of the sub-grant. Once the CHMP is approved by the PIU expert/WB specialist, it will be published on the website of the PIU, of the Agency for Promotion and Support of Tourism and the website of the Municipality of Kicevo together with the call for comments (containing postal, email address and fax number) and announcement of public consultation meeting (including date, time and venue location). It will be available for a public debate for at least 14 days. Printed form will be available in the LRCP and in the Municipality of Kicevo. The public debate meeting will be held in the Municipality of Kicevo, at the end of the consultation period. Actively, and by appropriate means (including at least one add in local and national newspapers, radio announcements), the applicant will inform and invite the broad public and/or stakeholders (local NGOs, affected communities, national and local IWW veterans and other associations, historians and potentially interested groups) to participate in the public debate. The submitted comments and the comments from the public debate will be included in the final version of CHMP and will be included in the report of the public debate that will be part of the final version of CHMP.

CHMP should be published in English, Macedonian and Albanian. The implementation of the Environmental and Social Management Plan and the Cultural Heritage Management Plan will ensure suitable implementation of the proposed measures and will contribute toward the implementation of the project activities without any significant impact on the environment or cultural heritage.

Mitigation Plan

Construction Phase					
Activity	Expected Environmental Impact	Mitigation Measure	Responsibility for Implementing Mitigation Measure	Period of Implementing Mitigation Measure	Cost associated with implementation of mitigation measure
Preparation of technical documentation	Disruption of the mode of protection when planning the project activities	<ul style="list-style-type: none"> - Preparation of project documentation in accordance with the positive legal regulations for protection of cultural heritage and according to the Decisionno/. 08-561 from 25.04.1990 for determining the status of the monument of culture of Kitino Kale - Approval of the project documentation from relevant institutions (NI Conservation Center - Skopje, Ministry of Culture (Directorate for Protection of Cultural Heritage) prior to commencement of construction works 	Municipality of Kicevo, Conservation Center - Skopje, Ministry of Culture (Directorate for Protection of Cultural Heritage)	Prior to initiating a public procurement procedure	Included in the budget of the sub-project
Conservation conditions	Application of the protection regime in defining the conditions	<ul style="list-style-type: none"> - Envisaged conditions for conservation for elimination of the impacts and risks on the cultural heritage according the Decision no.08-356 - 23.07.2018 from Directorate for Protection of Cultural Heritage, and conservation opinion up. no. 08-161 / 9 from 12.11.2018 - Incorporation of conservation conditions in project design and in CHMP 	Municipality of Kicevo, Conservation Center - Skopje, Ministry of Culture (Directorate for Protection of Cultural Heritage)	Prior to initiating a public procurement procedure	Included in the budget of the sub-project
Reconstruction of the fountain and the plateau, arrangement of access roads, horticultural arrangement, highlighting the cultural heritage (models of medieval towers at the place of surface remains), construction of pergola, arrangement of new corners for children, seniors, for de-digitization and fitness, construction of an open stage and reconstruction of an existing facility envisaged for a multimedia center	<ul style="list-style-type: none"> - Possible negative impacts on the authentic look of existing facilities in the complex Kitino Kale - Possible deviations from the measures for protection of cultural heritage 	<ul style="list-style-type: none"> - Reconstruction of existing facilities according to the measures and conditions for preservation of its authentic appearance - Conform to the cultural heritage regulations and act upon the conservation conditions according to Resolution UP 08-356 as of 23.07.2018 issued by the Directorate for Protection of Cultural Heritage Conservation Opinion UP 08-161/9 as of 12.11.2018. - Preservation of the authentic appearance of the existing facility located in the complex Kitino Kale, in order to ensure its adequate protection, as well as its putting into operation - Reconstruction and reuse of an existing fountain, located on the plateau in front of the building - Removal of construction material, waste and debris from the plateau in front of the building and installation of new cover (appropriate paving), in order to arrange the plateauand anywhere else on the site; - Replacement of dilapidated asphalt leading to the plateau in front of the Memorial-Ossuary, where care should be taken not to deepen the excavation of the ground from the already existing substrate - Horticultural and parterial arrangement of the park and installation of urban equipment, with no deeper soil excavation from the already existing substrate 	Municipality of Kicevo, Contractor, Supervisor, Co-ordinator of the sub-project	During the whole period of construction work	Included in the budget of the sub-project

		<p>-Preparation of installation buildings (children's corner, quality for pensioners, view and summer stage) to be taken into account, if excavation on the ground does not go deeper than 0,20 m or use the already existing substrate</p> <p>- No new excavations or earthworks will be performed on new surfaces, without prior consultation or approval from a competent institution for the protection of cultural heritage</p>			
Reconstruction of the fountain and the plateau, arrangement of access roads, horticultural arrangement, highlighting the cultural heritage (models of medieval towers at the place of surface remains), construction of pergola, arrangement of new corners for children, seniors, for de-digitization and fitness, construction of an open stage and reconstruction of an existing facility envisaged for a multimedia center	- Possible damages to archaeological findings, if potential excavation occur during construction works	<p>- Appropriate treatment in case of excavation of an archaeological find. The operations should immediately stop, and then the responsible institutions (Ministry of Culture, Directorate for Protection of Cultural Heritage, Conservation Center-Skopje) should be informed as soon as possible (but no more than 72 hours).</p> <p>The national procedures (The Law on Protection of Cultural Heritage in Article 65, paragraph 1), provides that " If an archaeological site, or items of archaeological significance were found during the performance of civil works, agricultural or other works, the executants of the work shall be obligated:</p> <ul style="list-style-type: none"> - To inform about the discovery within the meaning of Article 129 Paragraph 2 of this law; - To cease the operations and to secure the site against eventual damaging or destroying, as well as against unauthorized access and - To maintain the discovered items in the location and in condition they were found. - The operations will start again after the approval by a responsible institution. 	Municipality of Kicevo, Contractor, Supervisor, Co-ordinator of the sub-project	During the whole period of construction work	Included in the budget of the sub-project
All construction work	- Inadequate approach of the construction workers and other staff involved in the realization of the project activities, safety of the location and remains.	<p>- Provided adequate training in preservation procedures for physical cultural resources for all construction workers and other staff engaged in the project;</p> <ul style="list-style-type: none"> - No heavy machinery and large vehicles will be used in construction without expert assessment of soil stability; - Transport of equipment, materials and workflow will be carefully planned so no CH protected movable or immovable objects will be on the way and those in vicinity will be clearly marked and protected as necessary; 	Contractor, Supervisor, representatives from the municipal administration	Prior to commencing construction work	Included in the budget of the sub-project
Installation of the children's playground and fitness equipment	Safety	Installation will be in line with the national or/and international safety standards (stricter prevailing) and best practices.	Contractor, Supervisor, representatives from the municipal administration	During construction	Included in the budget of the sub-project
Preserving authentic design	Biodiversity	Only native plant species will be used in greening.	Contractor, Supervisor, representatives from the municipal administration	During construction	Included in the budget of the sub-project

Reconstruction of existing paths and roads in the complex Kitino Kale	- Possible effects on the cultural heritage if a deeper excavation happens then already existing one or if a new surface is excavated	<ul style="list-style-type: none"> - Monitoring of the conservation conditions according the Decision no.08-356 -23.07.2018 from Directorate for Protection of Cultural Heritage, and conservation opinion up. no. 08-161 / 9 from 12.11.2018, and the Plan for managing the works of the cultural heritage which are including: - Not to do deeper excavation from the already existing substrate Preparation of installation buildings (children's corner, quality for pensioners, view and summer stage) to be taken into account, if excavation on the ground does not go deeper than 0,20 m or use the already existing substrate - Not to excavate new surfaces without prior consultation or approval by a competent institution 	Contractor, Supervisor	- When performing construction works for reconstruction of existing paths and roads in the complex Kitino Kale	Included in the budget of the sub-project
Operational phase					
Protection of cultural heritage	Preventing vandalism and damage to CH and infrastructure	Consider increasing safety of the location by introducing additional safety measures e.g. cameras, night watch, closing the area during the night, installation of equipment or any other appropriate mean that would prevent burglary to memorial centre and other facilities as well as theft and vandalism.	Municipality	Continuously	Municipal budget
		Only activities that do not present the risk for existing cultural heritage will be allowed.	Municipality	Continuously	-

Monitoring Plan

Construction Phase					
What <i>Parameter is to be monitored?</i>	Where <i>Is the parameter to be monitored?</i>	How <i>Is the parameter to be monitored (what should be measured and how)?</i>	When <i>Is the parameter to be monitored (timing and frequency)?</i>	By Whom <i>Is the parameter to be monitored— (responsibility)?</i>	How much <i>is the cost associated with implementation of monitoring</i>
Providing all necessary approvals, opinions and conditions prior to commencement of construction works, as well as informing responsible institutions	Relevant institutions	Visual control of documentation	Before commencing construction work	Municipality of Kicevo, Contractor, Supervisor, Project Coordinator, LRCP	Included in the budget of the sub-project
Implementation of regulations and measures for the safety of cultural monuments and its protection	Construction site	Visual control	Every working day for the duration of the project activities	Municipality of Kicevo, Contractor, Supervisor, Project Coordinator	Included in the budget of the sub-project
Implementation of the measures envisaged in the CHMP and monitoring of the the approved conditions during construction works for the reconstruction of the fountain and the plateau, arranging access roads, horticultural arrangement, highlighting the cultural heritage (models of medieval towers at the site of their surface remnants), installing pergola, arrangement of newly designed corners for children, retirees, de-digitization and fitness, construction of an open stage and reconstruction of an existing facility intended for a multimedia center	Construction site	Visual control according to the stated conditions for performance by a competent authority Ministry of Culture, Directorate for Protection of Cultural Heritage and National Institution Conservation Center - Skopje	During the construction activities	Municipality of Kicevo, Contractor, Supervisor, Project Coordinator	Included in the budget of the sub-project



Republic of Macedonia
MINISTRY OF CULTURE
Directorate for Protection of Cultural Heritage
UP no. 08-356
July 23, 2018
Skopje

Republic of Macedonia
Municipality of Kichevo

A square seal
received on May 26, 2018
09-635/11

TO
MUNICIPALITY OF KICHEVO
Str. Boris Kidrich no. 1
6254 Kichevo

Subject: Delivery of Decision for Protection of conservation conditions

We attached and sent herewith the Decision for Protection of conservation conditions for preparation of project documentation *for revitalization of the locality Kitino Kale KP 1569/1, 1569/2, 1563/1, 1568, 1564, 1567/1 and 4374/1, Kichevo 6.*

With respect,

Director,
d-r Eleonora Petrova- Mitevaska
(signature)

Round official seal

Attachment: Decision for Protection of conservation conditions



Address: "Pavel Shacev" no.3, post no.220, 1000 Skopje, R. Macedonia tel: 02/3289-700 fax:02/2389-777
contact@uzko.gov.mk uzko@m-t-home.mk ordi@uzko.gov.mk upklunas@t-home.mk

Republic of Macedonia
MINISTRY OF CULTURE
Directorate for Protection of Cultural Heritage
UP no 08-356
July 23, 2018
Skopje

In accordance with Article 74 of the Law on Protection of Cultural Heritage (Official gazette of Republic of Macedonia no. 20/04, 71/04, 115/07, 18/11, 148/11, 23/13, 137/13, 164/13, 38/14, 44/14, 199/14, 104/15, 154/15, 192/15, 39/16 and 11/18), the director of the agency for protection of Cultural Heritage, a competent body within the Ministry of Culture, at request of the municipality of Kichevo (no. 09-835/4 from April 10, 2018) makes the following

DECISION
for issuance protective conservation conditions

IT IS APPROVED , as follows :

Protective conservation conditions *for construction of project documentation for revitalization of the locality Kitino Kale , located on KP 1569/1, 1569/2, 1563/1, 1568, 1564, 1567/1 and 4374/1 , Kichevo 6 at request of the municipality of Kichevo , performed by the National Conservation center of Cultural Heritage –Skopje (no. 08-161/5 from July 18, 2018).*

1. Project documentation for the locality should be prepared according to the following conservation conditions:

- during the preparation of the project documentation for the reconstruction of the existing facility, attention should be paid to the preservation of the authentic appearance of the same with the aim of its adequate protection and presentation, as well as its putting into function.
- the reconstruction of the existing fountain to be planned in the project and to be put into operation again.
- It is necessary to remove the scattered building material from the existing space on the plateau and re-install a new one
- to replace the dilapidated asphalt leading to the plateau of the memorial Ossuary, while taking care not to excavate the ground on the already existing base.
- to carry out a horticultural and parterre arrangement of the park in the part of the existing plateau and to plan urban equipment (benches, waste bins, which will be placed on the replaced old construction material with new ones) travertine or paver elements.
- IT IS FORBIDDEN carrying out any excavations and earthworks on new surfaces, without prior consultation or approval by the competent institution for the protection of cultural heritage

3. The costs for the construction of the protective conservation conditions are borne by the investor



4. The protective conservation conditions from point 2 of this Decision constitute the basis for the preparation of a preliminary design.

Explanation

The municipality of Kichevo has submitted a request for issuance of decision for protective conservation conditions *for preparation of project documentation for revitalization of the locality Kitino Kale KP 1569/1,1569/2,1563/1,1568, 1564,1567/1 and 4374/1 , Kichevo 6.*

The applicant enclosed following documents to the request:

- Copy of the contents of the detailed urban plan for the central city area " Stara Charshija" urban block 14"-Kichevo , brought by decision no. 07-3902/12 from November 13,2006 (issued under no. 09/14 sl from April 5, 2018) ;
- a copy of a cadaster plan 1106-369/2018 from April 10,2018
- a copy of the title deed no. 1105-2742/2018 from March 29,2018
- a copy of the title deed no. 1105-2744/2018 from March 29,2018
- a copy of the title deed no. 1105-2745/2018 from March 29,2018
- a copy of the title deed no. 1105-2746/2018 from March 29,2018
- photos of the building

After studying the documentation attached to the request and the prepared protective conservation conditions submitted by the National Conservation Center Skopje, the Cultural Heritage Protection Office has issued protective conservation conditions for the preparation of project documentation.

Taking into consideration the above the Cultural Heritage Protection Office acted in accordance with Article 74 of the Law on the Protection of Cultural Heritage.

LEGAL REMEDY: *Against this act can be submitted a complaint within 15 days to a state commission for decision-making in administrative procedure and a second-instance employment procedure*

Director,
d-r Eleonora Petrova- Mitevaska (signature)

Round official seal

prepared by B Kuzmanoska (signature)
approved by : M.scii. B.Jovanoska (signature)
Delivered to :
the municipality of Kichevo.
File
Archive

Address: "Pavel Shatev" no 3, post no.220,1000 Skopje ,R.Macedonia tel.02/3289-700 fax:02/2389-777
contact@uzka.gov.mk askarm@t-home.mk ord@uzkn.gov.mk upkulinas@t-home.mk

I do hereby certify that I have done
this translation correctly from
macedonian into English
45/19
5th April 2019
Kichevo Smileska Magdalena
tel.00389-70-62
e-mail:magdalenasmljeska@yahoo.com



Потврдувам дека правилно го извршив
преводот од македонски на англиски
јазик.
45/19
5 април 2019
Кичево
тел.070-623-825
e-mail:magdalenasmljeska@yahoo.com



Republic of Macedonia
NI NATIONAL CONSERVATION CENTER OF CULTURAL HERITAGE –SKOPJE

No. 08-161/9
Date : November 12,2018

MUNICIPALITY OF KICHEVO
KICHEVO
Republic of Macedonia
Municipality of Kichevo
received on November 16,2012
Number : 03-2665/7

SUBJECT: *Delivering an additional Decision for Protection of conservation conditions*
YOUR REF. NO. 03-2665/2 from November 1,2018

Upon your request under above mentioned ref. no. , we are delivering an additional Protection of conservation conditions for the locality "Kitino Kale " –Kichevo.

With respect

Director,
Mr sci. Memet Selmani
(signature)

Round official seal

prepared by d-r Mlie Velchovski (signature)
approved by : M.sci Cvetanka Hadji Pecova (signature)



Adress: "Josif Mihajlovikj" no.7 post no.225,1000 Skopje ,R.Macedonia te.02/3289600,3227-240 fax: 02 3289 668

web:<http://www.heritage.gov.mk> , e-mail:contact@heritage.gov.mk ,izsindok@mt.net.mk

Republic of Macedonia
NI NATIONAL CONSERVATION CENTER OF CULTURAL HERITAGE –SKOPJE
No. 08-161/9
Date : November 12,2018
Skopje

**ADDITIONAL CONSERVATION OPINION FOR PROTECTION OF CONSERVATION CONDITIONS
FOR REVITALIZATION OF THE
LOCALITY KITINO KALE-KICHEVO**

In accordance to the request for determination of **protection of conservation conditions for the locality Kitino Kale –Kichevo submitted by the Directorate for protection of conservation conditions** of cultural heritage-Skopje up no. 08-356 from april 13,2018 , to the National conservation center of cultural heritage –Skopje , org.unit : no. 161/3 from April 27,2018 based on decision no.161/4 from april 30,2018 issued by the National conservation center of cultural heritage –Skopje , the professional team consisted by members:

- 1.**D-r Mile Velchovski** , archaeologist, conservator-adviser, manager
- 2.**Aco Kostov**, di, a conservator, adviser, member
- 3.**Dejan Stanoev** , archeological technician, member

in accordance with Article 74 paragraph 4 of the Law on Protection of Cultural Heritage(Official gazette of Republic of Macedonia “ no. 20/04,71/04,115/07,18/11,148/11,23/13,137/13,164/13,38/14,44/14,199/14,104/15,154/15,192/15,39/16 and 11/18), **confirm** protective conservation conditions necessary for the preparation of a basic project for reconstruction of an existing facility and revitalization of the locality “Kitino Kale” –Kichevo.

Basic locality data

On the east periphery of the city rises the high hill with flatten plateau , with an approximately correct circular base that narrowed conically up to the top. There are visible remains of walls from medieval fortification on the east, north and south sides of this hill. At the foot of the archaeological site “Kitino Kale” that is registered as a monument of culture with a personal number 4-812-034/13 R ND. In the immediate vicinity of the site in its contact zone are built family houses.

On the west side in the period from 1955 to 1959. the terrain was forested and rearranged in the park. and at the top was built a memorial plait for the fallen fighters from the National Liberation War. In carrying out the construction works, remains from the basic parties of buildings for living were discovered, as well as remains of a bulwark, indicating that there was a settled settlement here. Also a large depot of medieval silver coins from the Tsar Dushan,(the King Volkashin and his successors was discovered here. A part of the depot is broken down, and part is kept at the National Museum in Belgrade, while a small part is kept by Sergej Dimitrievikj from Belgrade, who is late now.

During these activities, fragments of ceramic vessels with smaller and larger dimensions were discovered, which are dating from the Middle Ages, but, also from the discovered movable archaeological material it can be seen that the locality existed in prehistoric and protohistoric times, as well as in the period of the Byzantine Empire.



Status

The archaeological locality has been declared a cultural monument with a decision no.08-561 from April 25,1990 year.

General conditions

The basic project for Reconstruction of existing object and revitalization of the complex Kitino Kale –Kichevo, should be prepared according to:

The law on protection of cultural heritage;

Rulebook on conservation projects

Special conditions

-When preparing the prefabricated buildings (a children's corner, a corner for retirees, a sightseeing and a summer stage), to keep an eye on the excavation of the ground that should not be deeper than 0.20 cm, or the already existing base to be used.

-NOT to carry out any excavations and earthworks on new surfaces without prior consultation or approval by a competent institution for the protection of cultural heritage

Attchment:

Deed title
Copy of a cadaster plan

Professional team

D-r Mile Velchovski , archaeologist, conservator-adviser, manager
Aco Kostov, di, a conservator, adviser,
Dejan Stanoev , archeological technician, member

I do hereby certify that I have done this translation correctly from macedonian into English.
46/19
5th April 2019
Kichevo Smileska Magdalena
Магдалена
тел.00389-70-62-38-25
e-mail:magdalenasmileska@yahoo.com



Потврдувам дека правилно го извршив преводот од македонски на англиски јазик.
46/19
5 април 2019
Кичево
тел.070-623-875
e-mail:magdalenasmileska@yahoo.com

